



FACTS AND INFORMATION

SHANGRI-LA HOTEL, VANCOUVER

LOCATION

Located in vibrant downtown Vancouver, Shangri-La Hotel, Vancouver is just a stone's throw from Robson Street, the city's most famous shopping and nightlife district. The stunning outdoors is also just at the hotel's doorstep, with the breathtaking seawall and the most popular Stanley Park merely minutes away.

ACCOMMODATION

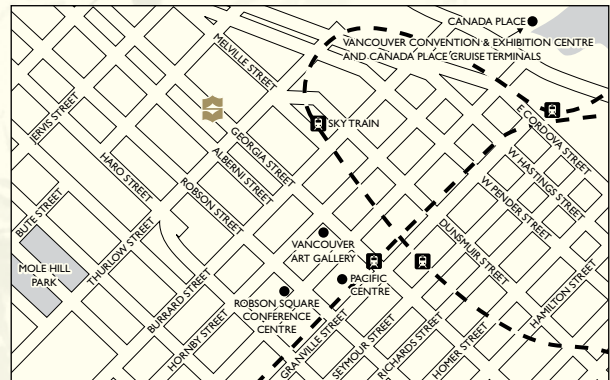
The hotel comprises of 119 expansive rooms and suites with more than half featuring balconies overlooking downtown Vancouver. The rooms are decorated in a contemporary style with distinct Asian touches and all have floor-to-ceiling windows letting in ample natural light.

GUESTROOMS

Categories	King	Twin	Average Area (m ²)
Superior Room	16	8	37 - 42
Deluxe Room	17	7	47 - 58
Executive King Room with Balcony	32	•	46 - 56
Executive Suite	15	•	52
One Bedroom Suite	16	•	65
Deluxe One Bedroom Suite	7	•	77
Orchid Suite	1	•	130

GUESTROOM FEATURES

- 42-inch flat-screen TV
- Digital PVR to record and play back live TV
- CD / DVD player with stereo surround sound
- iPod docking station
- Work desk with dual line
- Hands-free phone for complimentary local calls
- Complimentary broadband Internet access
- Oversized marble bathroom averaging 14 square metres
- Granite vanity with recessed sink
- Separate glass-enclosed shower, deep-soaking tub and separate toilet



BUSINESS CENTRE

Located on the 3rd floor, the 24-hour business centre is equipped with three flat screen computers, wireless high speed Internet, a coloured printer, fax machine and scanner. A private meeting space is also available providing state-of-the-art technology and full video conferencing facilities.

RECREATION FACILITIES

- 24-hour health club
- Private studio for yoga, stretching, pilates and dance
- Floor-to-ceiling windows
- Outdoor swimming pool

CHI, THE SPA

Known as a "spa within a spa", all treatment suites have their own fireplace, private bath and relaxation lounge. Based on the traditional Chinese philosophy of "Qi", the body's natural life force and energy, guests can choose from a myriad of treatments that will heal and revitalise.

OTHER SERVICES AND FACILITIES

- Private and secure entrance and reception
- Easily accessible driveway
- Glass elevator access to the lower lobby
- Private limousine transfers
- Concierge services

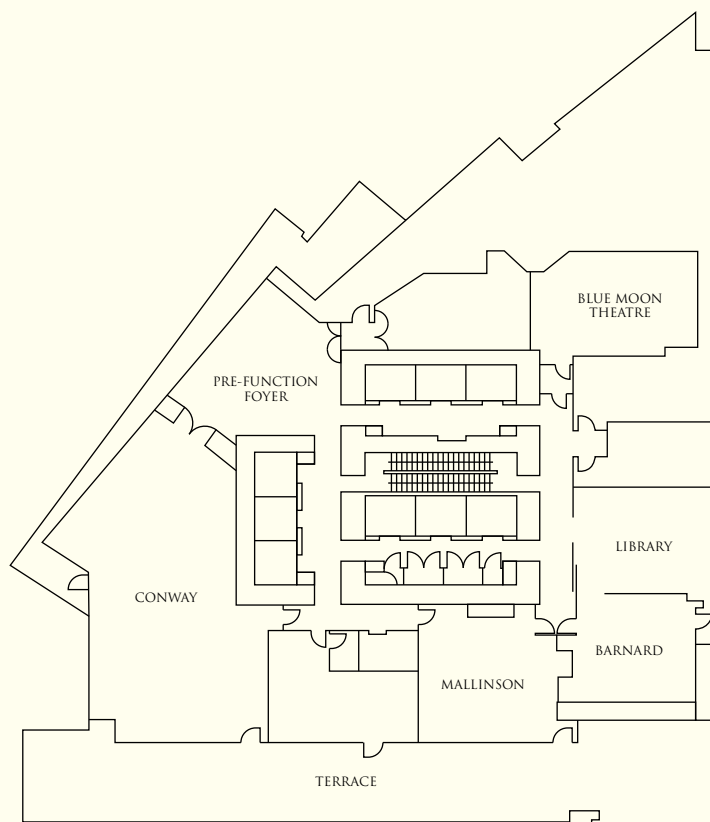
RESTAURANTS AND BARS

Restaurants / Bars	Capacity	Location	Cuisine
Market	320 (including seasonal patio)	Level 3	Modern Pacific cuisine
Xi Shi Lounge	60 (including seasonal patio)	Lobby level	Gastro pub food
Ginger Juice Bar	20	Level 5 adjacent to the pool and fitness centre	Blended fruit juice smoothies and healthy snacks

BANQUET AND CONFERENCE ROOMS

Venue	Capacity						Dimensions (m)	Area (m ²)	Ceiling Height (m)
	Reception	Theatre	Banquet	Classroom	U-shape	Boardroom			
Conway	140	110	120	70	30	30	18.9 x 7.9	170	3
Pre-Function Foyer	60	•	•	•	•	•	8.5 x 8.5	60	3
Terrace	100	•	60	•	•	40	4.3 x 36.6	175	•
Mallinson	40	35	20	18	15	18	8.4 x 7.5	62	2.7
Barnard	30	25	20	15	12	12	6.1 x 6.4	40	3
Library	40	35	40	27	15	18	7.6 x 6.7	51	2.4
Blue Moon Theatre	•	38	•	•	•	•	8.8 x 6.4	53	2.7
Business Centre (Level 3)	•	•	•	•	•	12	•	22	•

LEVEL 6





SHANGRI-LA

HOTELS *and* RESORTS

Shangri-La Hotel, Vancouver

1128 West Georgia Street, Vancouver, B.C. V6E 0A8, Canada

Tel: (1 604) 689 1120 Fax: (1 604) 689 1195 slv@shangri-la.com www.shangri-la.com