

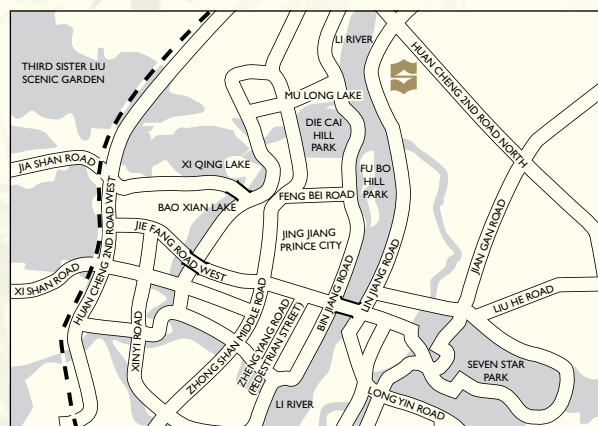


FACTS AND INFORMATION

SHANGRI-LA HOTEL, GUILIN

LOCATION

Shangri-La Hotel, Guilin is situated on the banks of the picturesque Li River in Guilin, one of China's most beautiful cities surrounded by a dramatic landscape of unique karst mountains. The hotel is ideal for both business and leisure travellers with popular tourist attractions nearby, the International Exhibition and Conference Centre just 10 minutes away and the Guilin Liang Jiang International Airport only 35 minutes away by car.



ACCOMMODATION

The hotel comprises of 449 elegantly appointed guest rooms and suites with a minimum of 42 square metres, by far the largest in the city. All rooms provide beautiful views of the Li River or the hotel's lush landscaped gardens. The Executive River View Rooms have outdoor terraces with panoramic views of the river and the captivating karst mountains in the distance.

GUESTROOMS

Categories	Rooms	Area (m ²)
Deluxe Room	214	42
Deluxe River View Room	107	42
Executive River View Room	27	42
Horizon Room	52	42
Horizon River View Room	22	42
Horizon Premier Room	10	58
Executive Suite	13	84
Specialty Suite	3	126
Presidential Suite	1	210

GUESTROOM FEATURES

Each room features floor-to-ceiling windows with views of the city, the beautiful Li River or the stunning karst mountains.

- Complimentary broadband wired and wireless Internet access
- Satellite / cable 37-inch LCD television
- In-house movie channels
- CD / DVD and MP3 player (Horizon Club rooms and suites only)
- Multi-media hub
- Coffee / tea making facilities
- Minibar
- Full-size executive writing desk
- International Direct Dial telephone
- Voice mail
- Electronic in-room locker
- Bedside lighting controls
- Shangri-La toiletries
- Hair dryer
- Feather duvet and pillows
- Pillow menu with hypoallergenic options (Horizon Club rooms and suites only)
- Separate shower cubicles and bathtub
- Anti-fog mirrors
- Iron and ironing board

RESTAURANTS AND BARS

Restaurants / Bars	Capacity	Location	Cuisine
Li Café	228	Level 1	International and Guilin
Shang Palace	220	Levels 1 and 2	Cantonese, Huaiyang, Hunan and Guilin
U Bar	98	Level 1	Western grill and bar
Lobby Lounge	128	Level 1	Snacks and beverages
Pool Bar	50	Poolside	Snacks and beverages

HORIZON CLUB PRIVILEGES

- Private check-in and check-out at the Horizon Club Lounge on Level 6
- Check-out as late as 6:00pm
- Complimentary access to the Horizon Club Lounge from 6:00am to 11:00pm
- Complimentary use of Horizon Club meeting room for 2 hours per day
- Complimentary buffet breakfast, evening cocktails, and hors d'oeuvres
- One complimentary suit pressing upon arrival
- Complimentary daily international newspaper
- Concierge service
- Complimentary coffee, juices, and soft drinks during the day

INTERNET LOUNGE

The lounge provides complimentary Internet access with work stations and a wide range of business and secretarial support, including translation, courier and photocopying services. Private meeting rooms are also available.

RECREATION FACILITIES

- Health club
- Indoor and outdoor swimming pools
- Outdoor tennis courts
- Massage
- Jacuzzi, sauna and steam rooms
- Spa

OTHER SERVICES AND FACILITIES

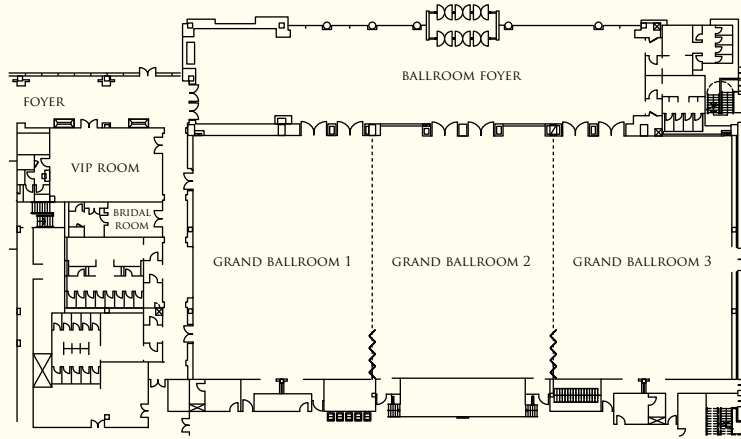
- 24-hour in-room dining
- Wheelchair-accessible rooms
- Non-smoking rooms
- Gift and retail shops
- Tour desk
- IT butlers
- Babysitting / child care
- Safe deposit boxes
- Taxi and limousine service
- Underground parking

BANQUET AND CONFERENCE ROOMS

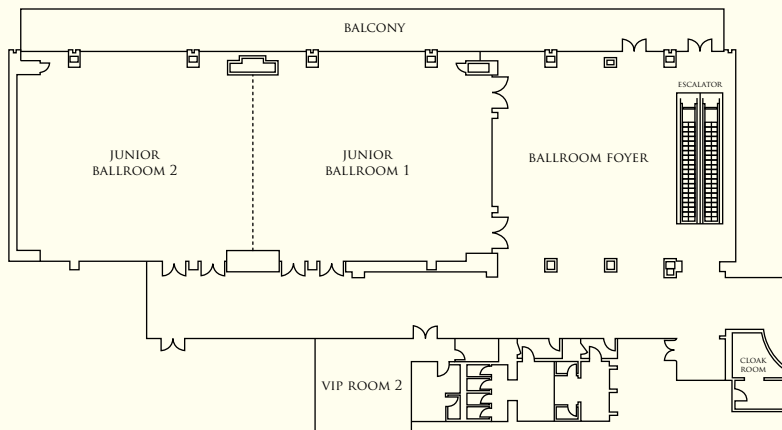
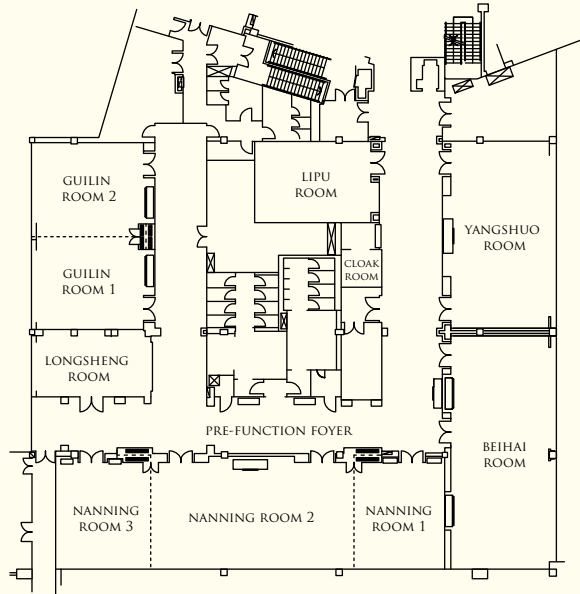
Venue	Capacity						Dimensions (m)	Area (m ²)	Ceiling Height (m)
	Reception	Theatre	Banquet	Classroom	U-Shape	Boardroom			
Level 1									
Grand Ballroom	2,000	2,000	1,100	864	•	•	60 x 30	1,800	9
Ballroom 1	670	600	280	288	102	108	20 x 30	600	9
Ballroom 2	670	600	280	288	102	108	20 x 30	600	9
Ballroom 3	670	600	280	288	102	108	20 x 30	600	9
Ballroom 1+2	1,300	1,000	600	600	•	•	40 x 30	1,200	9
Ballroom 2+3	1,300	1,000	600	600	•	•	40 x 30	1,200	9
Ballroom Foyer	450	•	•	•	•	•	50 x 11	550	9
VIP Room	80	•	•	•	•	•	12 x 7.3	88	3.1
Level 2									
Junior Ballroom	540	500	280	260	102	108	36 x 15	540	3.45
Junior Ballroom 1	270	250	140	130	50	54	18 x 15	270	3.45
Junior Ballroom 2	270	250	140	130	50	54	18 x 15	270	3.45
Ballroom Foyer	180	•	•	•	•	•	9.5 x 15	142	3.45
VIP Room 2	40	•	•	•	•	•	7 x 7	49	3.45
Boardroom*	•	•	•	•	•	18	17.5 x 7.6	133	3.1
Nanning Room	260	200	140	99	78	76	30 x 8.6	258	3.4
Nanning Room 1	60	50	30	27	24	22	7 x 8.6	60	3.4
Nanning Room 2	120	100	80	54	42	40	16 x 8.6	138	3.4
Nanning Room 3	60	50	30	27	24	22	7 x 8.6	60	3.4
Beihai Room	150	120	90	72	42	40	18 x 8.6	155	3.5
Guilin Room	120	90	60	54	36	34	14 x 9.5	134	3.3
Guilin Room 1	60	46	30	27	24	22	7 x 9.5	67	3.3
Guilin Room 2	60	46	30	27	24	22	7 x 9.5	67	3.3
Yangshuo Room	110	90	60	54	36	34	14.5 x 8.5	123	3.5
Lipu Room	55	40	20	24	15	18	9.5 x 6	57	3.4
Longsheng Room	55	40	20	24	15	14	9.5 x 5	48	3.4
Pre-Function Foyer	180	•	•	•	•	•	39 x 8	312	3.1

* The Boardroom includes a lounge area of 42 square metres.

LEVEL 1



LEVEL 2





SHANGRI-LA

HOTELS *and* RESORTS

Shangri-La Hotel, Guilin

111 Huan Cheng Bei Er Lu, Guilin, Guangxi 541004, China

Tel: (86 773) 269 8888 Fax: (86 773) 269 8887 slgl@shangri-la.com www.shangri-la.com