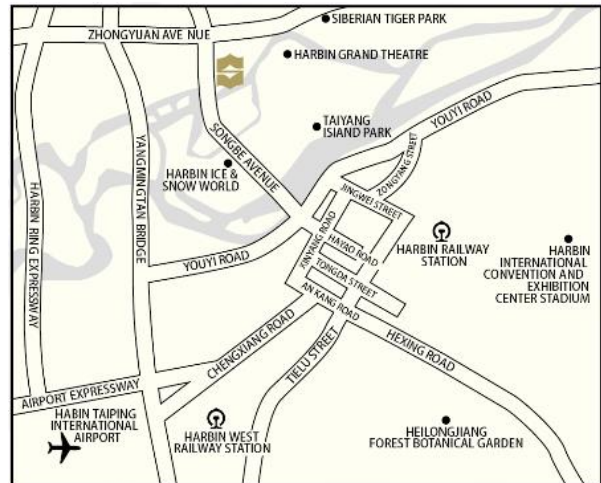


FACTS AND INFORMATIONS

SONGBEI SHANGRI-LA, HARBIN

LOCATION

Songbei Shangri-La, Harbin occupies a prime position on the edge of the Songhua River's north bank which is conveniently located a mere five-minute drive from Harbin's internationally renowned ice festival at the Ice & Snow World, and close to local attractions namely the Sun Island Garden, Siberian Tiger Park and Harbin Grand Theatre. The international airport and Harbin West Railway Station are 40 minutes and 30 minutes away respectively.



ACCOMMODATION

344 guest rooms and 33 executive serviced apartments offer surrounding river and city views. Surrounding guests with a high level of comfort and privacy are guest rooms and apartments ranging from 42 to 175 square metres. Serenely appointed in tranquil hues and bespoke artwork, all-encompassing views of the city and river are framed within the floor-to-ceiling windows. Mood lighting, quality linen and luxury amenities will be available in addition to a Horizon Club Lounge and dedicated guest floors to offer personalised concierge service and benefits.

GUESTROOMS

Categories	Room	Area (m ²)
Deluxe King Room	63	42
Deluxe Twin Room	91	42
Panoramic River View King Room	75	42
Panoramic River View Twin Room	47	42
Horizon Deluxe King Room	24	42
Horizon Deluxe Twin Room	9	42
Horizon Panoramic River View King Room	13	42
Horizon Panoramic River View Twin Room	2	42
Executive Suite King	16	91
Executive Suite Twin	1	91
Lilac Suite	1	133
Songbei Suite	1	133
Shangri-La Suite	1	175

Apartment	Room	Area (m ²)
Studio Apartment	6	44
1 Bedroom Apartment	15	84
1 Bedroom Apartment	6	93
2 Bedroom Apartment	6	133

GUESTROOM FEATURES

All guestrooms are fully equipped with modern amenities, including:

- In-room wired Internet and Wi-Fi access
- 43-inch LED TV
- Satellite / cable television with extensive news and movie channels
- Iron and ironing board
- Laundry and valet service
- Mini-bar
- Voice mail
- Electronic safe
- Coffee and tea-making facilities
- 24-hour in-room dining

HORIZON CLUB PRIVILEGES

- Private check-in and check-out at the Horizon Club Lounge on top floor level 28
- Late check-out at 4 pm (subject to room availability)
- Access to the Horizon Club Lounge from 6:30 am to 11 pm
- Enjoy buffet breakfast, evening cocktails and canapé selections
- Enjoy coffee, juices and soft drinks during the day
- Concierge service
- Two hours use of the Club Lounge meeting room
- International newspaper and fresh fruit delivered to room daily
- One suit pressing upon arrival
- Full range of secretarial services provided by the Club

CELEBRATION CENTRE

The hotel's function support centre provides a wide range of business and secretarial support including faxing, photocopying, courier and translation services, broadband Internet access and a number of private work stations.

RECREATION FACILITIES

- Fully-equipped health club and gymnasium
- Indoor swimming pool
- Jacuzzi, sauna and steam rooms
- Full spa services and private treatment rooms

OTHER SERVICE AND FACILITIES

- Non-smoking rooms
- Courier, parcel and postal service
- Limousine service
- Parking facilities
- Foreign exchange

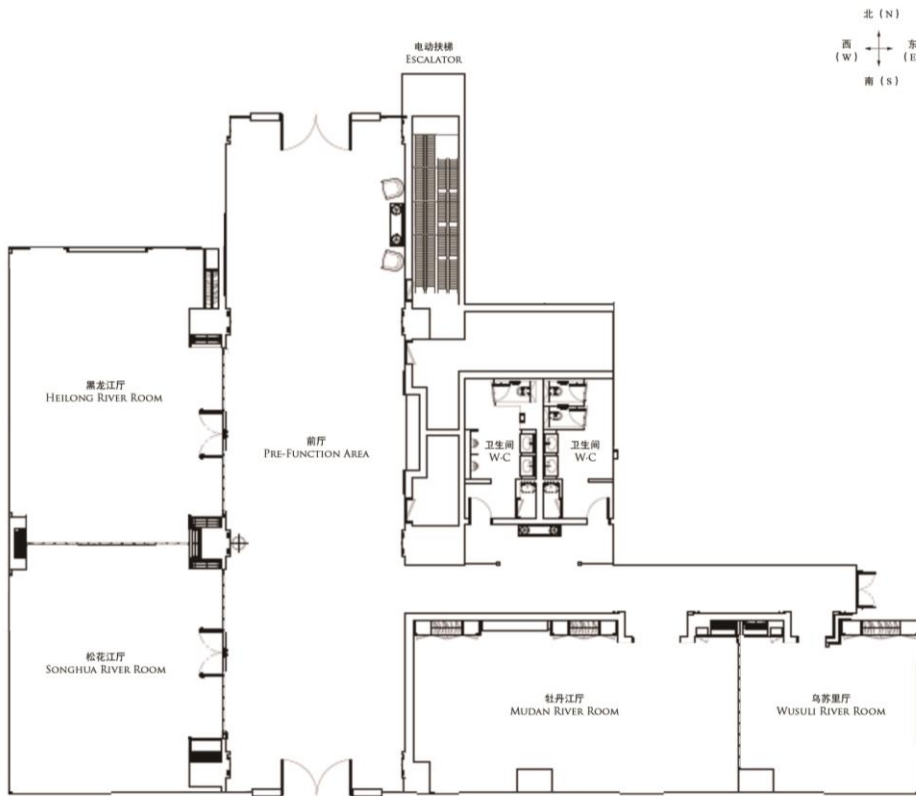
RESTAURANTS AND BARS

Restaurants / Bars	Capacity	Location	Cuisine
Café Song	200	Level 1	International
Lobby Lounge	74	Level 1	Beverage & snacks
Shang Kitchen	146	Level 1	Peking roast duck, clay pot dishes and regional specialties
De Drunk'n Pig	90	Level 1	Snacks, local & international beer

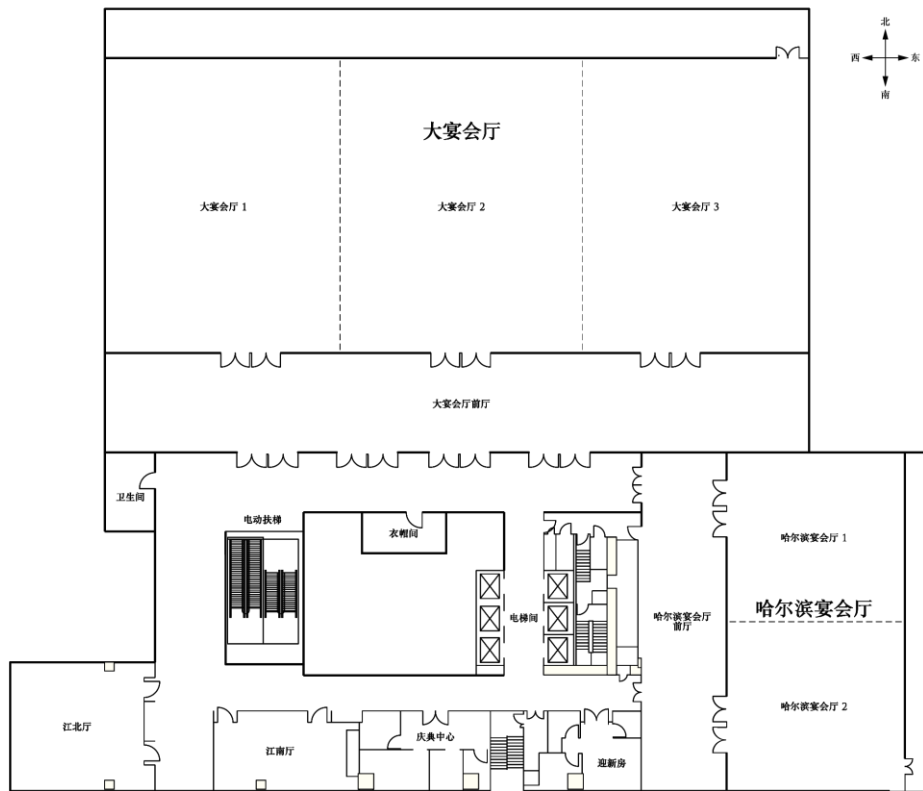
BANQUET AND CONFERENCE ROOMS

Venue	Capacity				Dimensions (m)	Area (m ²)	Ceiling Height (m)
	Reception	Theatre	Banquet	Classroom			
Level 1							
Heilong River Room	120	100	50	45	12.6 x 9.9	126	4.3
Songhua River Room	100	80	40	36	11.4 x 9.9	112	4.3
Heilong River and Songhua River Room	220	180	90	90	24 x 9.9	238	4.3
Pre-Function Area	•	•	•	•	29.6 x 7.8	230	4.3
Mudan River Room	100	80	40	36	13.9 x 8.2	108	3.0
Wusuli River Room	55	20	20	12	7.7 x 7.2	60	3.0
Mudan River and Wusuli Rivers	155	100	60	48	21.6 x 8.2	168	3.0
Level 2							
Grand Ballroom	1,600	2,100	1,050	1080	63 x 26	1,616	8.2
Grand Ballroom 1	500	700	350	360	20 x 26	528	8.2
Grand Ballroom 2	500	700	350	360	22 x 26	563	8.2
Grand Ballroom 3	500	700	350	360	20 x 26	525	8.2
Grand Ballroom Pre- Function Area					64.6 x 7.2	465	6.0
Harbin Ballroom	400	380	200	180	29 x 14	408	5.5
Harbin Ballroom 1	200	190	100	90	14 x 14	196	5.5
Harbin Ballroom 2	200	190	100	90	15 x 14	212	5.5
Harbin Ballroom Pre- Function Area					29 x 7	203	5.5
Jiangnan Room	60	70	30	30	6 x 11	68	4.0
Jiangbei Room	120	140	60	60	10 x 12	123	3.8

Level 1 – Banquet and Conference Rooms



Level 2 – Banquet and Conference Rooms





Songbei Shangri-La, Harbin

No. 1 Songbei Avenue, Songbei District, Harbin 150028, China

Tel: (86 451) 5862 9999 Fax: (86 451) 5862 2777

shas@shangri-la.com www.shangri-la.com