



FACTS AND INFORMATION

SULE SHANGRI-LA, YANGON

LOCATION

Elegant piano music fills the air as you step into the lobby of Sule Shangri-La, Yangon, which lies at the heart of one of Southeast Asia's most exciting cities. Sule Shangri-La, Yangon is conveniently located in downtown Yangon near major tourist attractions, such as the Bogyoke Market (Scott Market), Sule Pagoda, China Town and colonial buildings. Sule Shangri-La, Yangon, is only 10-minute drive from Shwedagon Pagoda, People's Park, the National Museum and Kandawgyi Lake. All of the hotel's rooms and public areas feature the fastest complimentary Wi-Fi Internet access in the country. The hotel is also attached to the Sule Square Mall and Officer Tower, a modern grade A commercial complex that offers three (3) floors of retail podium and 15 floors of offices. The Sule Square Mall is the first upscale mixed-use complex in Yangon, offering an unparalleled location for both business and leisure.

ACCOMMODATION

The hotel comprises 470 expansive guestrooms and suites, each characterised by elegant contemporary décor and executive-style furnishings. Rooms come with a full array of amenities and facilities, spacious bathrooms and feature outstanding views of either the city, the pagoda or the river. For the more discerning business traveller, Horizon Club Rooms offer a host of additional privileges and an even higher level of personalised service.

GUESTROOM FEATURES

- 24-hour room service
- Complimentary Wi-Fi Internet access
- Satellite / cable television
- Electronic safe
- Full-size executive writing desk
- International Direct Dial telephone
- Hair dryer
- Iron and ironing board
- Coffee / tea-making facilities
- Premium Toiletries
- Mini-bar
- Castor chair for easier movement



GUESTROOMS

Categories	Rooms	Area (m ²)
Deluxe Room	358	34
Horizon Club Room	74	34
Executive Suite	14	66-71
Deluxe Suite	12	66-71
Club Suite	2	126
Presidential Suite	1	189
1 Bedroom apartment	9	68

HORIZON CLUB PRIVILEGES

- Personalized check-in and check-out service
- Complimentary breakfast and all-day refreshments (non-alcoholic)
- Evening drinks and canapés between 5:30pm and 7:30pm daily
- Daily fresh fruits

Access to lounge facilities:

- Complimentary Wi-Fi Internet access
- Private meeting rooms
- Wide selection of newspapers, magazines and books

OTHER SERVICES AND FACILITIES

- Limousine service
- Laundry and Dry Cleaning service
- Basement Parking
- Clinic
- Self-service ice machines on selected floors
- Business Centre services
- Tour desk
- Souvenir Shop
- Money Changer

RECREATION FACILITIES

- Fitness centre
- Jacuzzi, sauna and steam room
- Outdoor swimming pool
- Beauty centre
- Massage rooms

RESTAURANTS AND BARS

Restaurants / Bars	Capacity	Location	Cuisine
Café Sule	150	Lobby level	International / local cuisine
Summer Palace	210	Level 2	Chinese
Peacock Lounge	105	Lobby level	Light snacks / drink
Gallery Bar & Restaurant	70	Level 2	Cocktails / Western dining
Gourmet Shop	25	Lobby Level	Bakery items, snacks & sweets

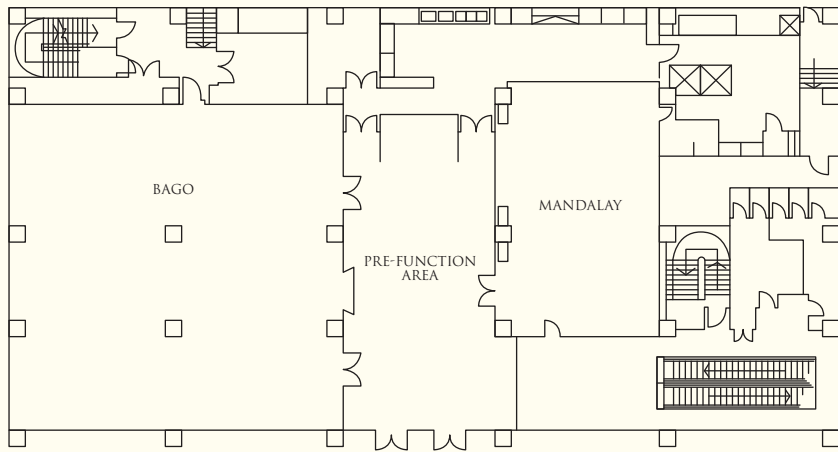
BANQUET AND CONFERENCE ROOMS

Venue	Reception	Theatre	Capacity				VIP setup	Dimension (m)	Area (m ²)	Ceiling Height (m)
			Banquet	Classroom	Boardroom					
Level 1										
Bago	180	300	140	105	•	•	16.2 x 16.5	267	3.0	
Mandalay	50	70	40	54	28	20	12.7 x 8.0	102	3.0	
Pre-Function Area	50	•	•	•	•	•	13.5 x 7.6	103	3.0	
Level 2										
Pre-Function Area	150	•	60	•	•	•	12.6 x 15.8	195	3.8	
Ballroom Foyer	100	•	60	•	•	•	5.5 x 28.0	135	3.8	
Ballroom I	150	250	120	126	•	•	12.4 x 23.5	290	7.0	
Ballroom II	200	420	240	210	•	•	20.0 x 23.5	470	7.0	
Myanmar Ballroom*	500	750	480	450	•	•	32.4 x 23.5	760	7.0	
Yangon	•	•	•	•	•	10	4.7 x 6.2	29	•	
Level 3										
Pre-Function Area	50	•	40	•	•	•	8.2 x 9.5	78	2.5	
Innwa	40	40	40	36	18	•	7.4 x 9.3	69	2.5	
Taung Ngu	40	40	40	36	18	•	9.3 x 9.0	83	2.5	
Innwa-Taung Ngu*	100	80	80	81	40	•	16.4 x 9.3	152	2.5	
Pinya	40	50	40	30	18	•	9.3 x 7.7	71	2.5	
Konbaung	60	50	40	36	20	•	10.0 x 8.1	80	2.5	
Tagaung	50	50	40	36	18	•	8.7 x 8.1	70	2.5	
Konbaung-Tagaung*	100	120	80	81	40	•	19.0 x 8.1	150	2.5	
Nyaung Yan	•	•	•	•	8	•	3.4 x 6.0	21	2.5	

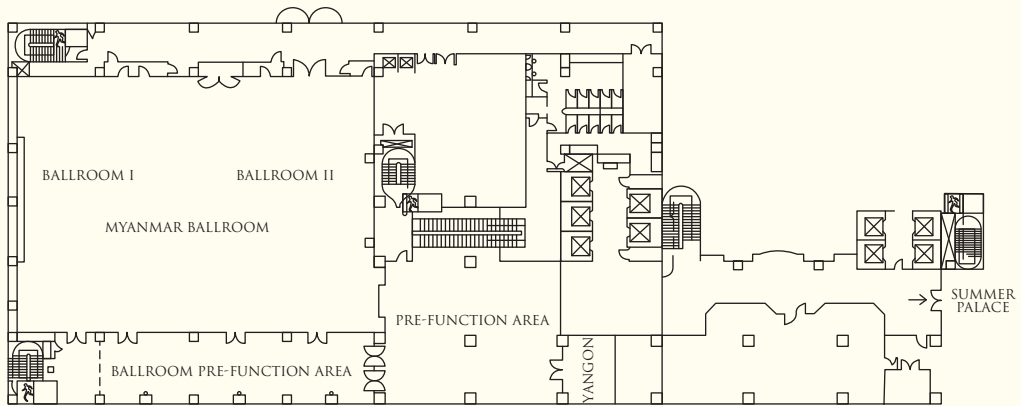
* Connecting 2 rooms

Capacity shown above excludes set ups that may require a stage or dance floor

LEVEL 1

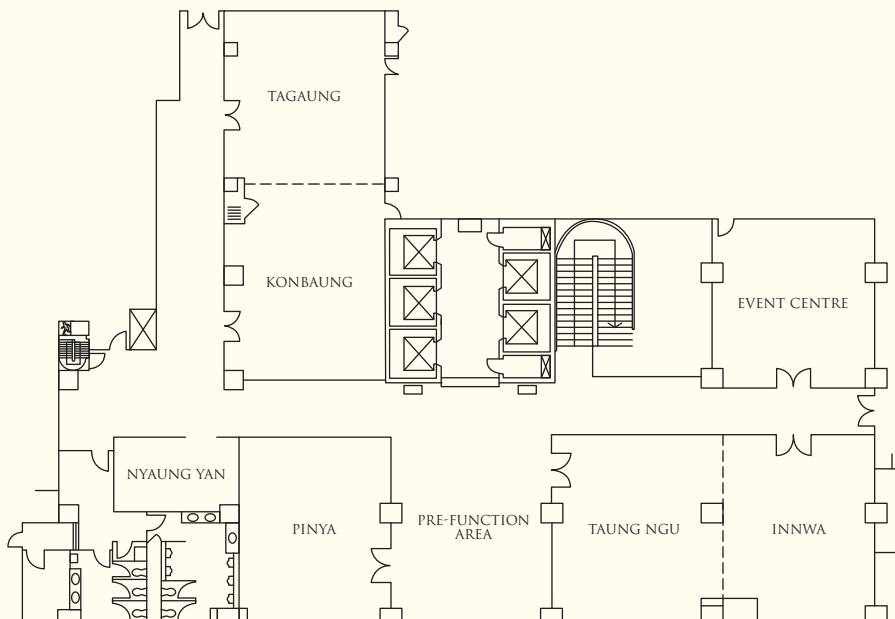


LEVEL 2



* Note: All function areas are non-smoking

LEVEL 3



* Note: All function areas are non-smoking



SHANGRI-LA

HOTELS *and* RESORTS

Sule Shangri-La, Yangon

223 Sule Pagoda Road, G.P.O. Box 888, Yangon, Myanmar

Tel: (95 1) 242 828 Fax: (95 1) 242 800 ssyn@shangri-la.com www.shangri-la.com