



INSPIRED EVENTS


SHANGRI-LA
SYDNEY





TABLE OF CONTENTS

WELCOME

Welcome to Shangri-La Sydney 7
 Six Key Benefits 9

EVENT SPACES

Ballroom 11
 Cambridge I–IV 15
 Essex I & II 19
 Bradfield Lounge 23
 Cumberland I & II 27
 Heritage I & II | Heritage Plaza 31
 Harbour, Opera & Quay Rooms 35
 Lobby Lounge 39

SPECIALTY VENUES & PACKAGES

Altitude Breakfast Buyout 43
 Level 36 Residential Buyout 47
 Special Packages 51
 Day Delegate Package 55

CULINARY ORIGIN

Rooted in Sustainability..... 57

FLOOR PLANS

Floor Plans 61



WELCOME TO SHANGRI-LA SYDNEY

Shangri-La Sydney offers one of the city's most impressive selections of conference venues, meeting rooms and function spaces, with over 2,500 square metres of flexible event space designed for conferences, gala dinners, incentives and corporate gatherings. Located in the historic Rocks precinct, the hotel combines world-class facilities with a truly iconic Sydney setting.

Anchored by the elegant Grand Ballroom, the hotel features 18 versatile meeting and function spaces catering to groups from 10 to 700 guests. Each venue is equipped with advanced audiovisual technology, including LED screens and seamless hybrid connectivity, supported by experienced on-site specialists to ensure flawless execution.

Above the event floors, guests can enjoy 565 contemporary rooms and suites, award-winning dining experiences and premium wellness facilities. Iconic views of the Sydney Opera House and Harbour Bridge allow delegates to stay, meet and unwind in one extraordinary destination.

From multi-day conferences and incentive programs to executive meetings and gala celebrations, Shangri-La Sydney brings together exceptional service, refined spaces and one of the city's most prestigious locations to create events that leave a lasting impression.





SIX KEY BENEFITS

- Complimentary accommodation for the organiser for events of 250 guests or more.
- Complimentary parking for up to four cars.
- Complimentary 30minute pre-dinner drinks for VIPs in a separate area.
- Complimentary early access (subject to availability).
- Complimentary menu tasting for up to four persons for events of 250 guests or more.
- Complimentary dinner voucher for two with a minimum spend of \$30,000 or more.



BALLROOM



The Grand Ballroom I & II at Shangri-La Sydney is a sophisticated, pillarless venue ideal for large conferences, gala dinners, award ceremonies and corporate celebrations. Elegant decor and adaptable layouts allow the space to be used as one expansive ballroom or divided into two, accommodating a wide range of event styles and capacities.

Directly connected pre-function lobbies provide refined spaces for guest arrivals, registration, networking and welcome drinks. Covering 670 square metres, the venue accommodates up to 700 guests in theatre-style, 350 in classroom-style, 410 in cabaret-style or 492 in banquet-style. The adjoining pre-function areas also serve as sophisticated spaces for breakout sessions and additional networking.

An onsite audiovisual partner supports the ballroom with high-quality LED screens, flexible production solutions and seamless connectivity for both hybrid and in person events. With customisable catering options and professional event support, the Grand Ballroom is ideal for conferences, product launches and high-profile corporate events in Sydney.

KEY FEATURES

- Pillarless ballroom with flexible one or two-room configuration
- 670 square metres of event space with 4.15 m ceiling height.
- Capacity: up to 700 theatre-style, 350 classroom-style, 410 cabaret-style or 492 banquet-style
- Elegant pre-function lobbies for arrivals, networking and breakout sessions
- High-quality LED screens and onsite audiovisual support
- Suitable for conferences, gala events, awards and corporate celebrations
- Located on Level B

Venue hire starts from \$20,000.

VIRTUAL TOUR



CAMBRIDGE



Cambridge I–IV at Shangri-La Sydney are versatile, naturally lit meeting rooms that can be divided into four separate spaces or combined into one larger venue. Ideal for conferences, seminars, workshops and breakout sessions.

Covering 185 square metres, the space accommodates up to 150 guests in theatre-style, 80 in classroom or cabaret-style, or 100 in banquet-style. Partial views of Sydney Harbour and the Harbour Bridge provide an inspiring backdrop.

KEY FEATURES

- Versatile, naturally lit meeting rooms with flexible configurations
- Can be divided into four breakout rooms or combined into one larger space
- Ideal for conferences, seminars, workshops and multi-session events
- Capacity up to 150 guests theatre-style
- Partial views of Sydney Harbour and the Harbour Bridge
- Multiple setup options including classroom, cabaret, boardroom and U-shape
- Located on Level 3

Venue hire starts from \$5,000.

VIRTUAL TOUR



ESSEX



Essex I & II at Shangri-La Sydney are flexible, pillarless meeting rooms ideal for corporate meetings, breakout sessions, workshops and collaborative discussions. Natural light and views across Observatory Hill create a productive environment for focused events.

Spanning 115 square metres, the space accommodates up to 90 guests in theatre-style, 48 in classroom or cabaret-style, or 60 in banquet-style. Clear sightlines, adaptable layouts and customisable catering packages make Essex I & II ideal for interactive meetings and presentations.

KEY FEATURES

- Flexible, pillarless meeting rooms with clear sightlines
- Naturally lit space with views over Observatory Hill
- Ideal for corporate meetings, workshops and breakout sessions
- Capacity up to 90 guests theatre-style
- Multiple setup options including classroom, cabaret, boardroom and U-shape
- Customisable catering packages available
- Located on Level 3

Venue hire starts from \$2,000.

[VIRTUAL TOUR](#)



BRADFIELD



Bradfield Lounge at Shangri-La Sydney is a naturally lit meeting and event space ideal for mid-sized meetings, networking events and cocktail-style receptions. Located on Level 1, the venue offers a bright and comfortable setting with flexible layouts suited to both professional and social events.

The space measures 155 square metres and accommodates up to 90 guests in theatre-style, 48 in classroom or cabaret-style, or 60 in banquet-style. Setup options include theatre, classroom, cabaret, boardroom and U-shape configurations.

Customisable catering options include breakfast, lunch, dinner, canapés and cocktail packages.

KEY FEATURES

- Naturally lit space for mid-sized meetings and events
- Flexible layouts for meetings, networking and receptions
- Capacity up to 90 guests theatre-style
- Multiple setup options including boardroom and U-shape
- Customisable catering and cocktail packages
- Located on Level 1

Venue hire starts from \$2,500.



CUMBERLAND



Cumberland I & II at Shangri-La Sydney are private and professional boardrooms ideal for executive meetings, confidential discussions, and focused strategy sessions. Located on Level 3, the venues offer an intimate and refined setting with natural light and iconic Sydney Harbour Bridge views.

The space measures 75 square metres and accommodates up to 14 guests in a boardroom configuration.

Customisable catering options include breakfast, lunch, dinner, plated or buffet service, canapé, cocktail, networking and conference packages, as well as coffee, tea and light refreshments.

KEY FEATURES

- Private and professional boardroom setting with Sydney Harbour Bridge views
- Ideal for executive meetings and small strategy sessions
- Capacity for up to 14 guests boardroom-style
- Dedicated pre-function area for refreshments, networking or breaks
- Customisable catering and conference packages
- Located on Level 3

Venue hire starts from \$1,500.



HERITAGE



Heritage I & II and the Heritage Plaza at Shangri-La Sydney are naturally lit meeting and event spaces offering charming heritage character and flexible indoor-outdoor flow. Located on Level G, these venues are ideal for seminars, workshops, networking events, group arrivals and intimate celebrations.

Heritage I & II measure 122 square metres and accommodate up to 100 guests theatre-style, 60 classroom-style, 56 cabaret-style or 70 banquet-style. The adjoining Heritage Plaza is a 130-squaremetre covered outdoor space, ideal for event breaks, networking sessions, welcome drinks, casual refreshments or Welcome to Country ceremonies. It can be used independently or combined with Heritage I & II for larger gatherings.

Customisable catering options include plated and buffet menus, cocktail and canapé receptions, conference packages and light refreshments. With direct access to Heritage Plaza and flexible setup options, this venue offers an elegant and versatile setting for meetings and events.

KEY FEATURES

- Naturally lit spaces with heritage character
- Flexible indoor-outdoor flow with Heritage Plaza
- Ideal for seminars, workshops and networking events
- Capacity up to 100 guests theatre-style
- Covered outdoor plaza for breaks and welcome drinks
- Located on Level G

Venue hire starts from \$2,500.



HARBOUR, OPERA & QUAY ROOMS



The Harbour, Opera and Quay Rooms at Shangri-La Sydney are a collection of intimate, purpose-built meeting spaces ideal for executive meetings, small workshops and private discussions. Featuring natural light and views across Sydney Harbour Bridge and Circular Quay, these rooms provide an inspiring and professional setting for focused boardroom-style sessions.

Ranging from 26 to 55 square metres, these flexible spaces accommodate between 8 and 18 guests in boardroom or U-shape configurations. Their quiet environment, tailored setups and customisable catering options make them ideal for high-level meetings and small group collaborations.

KEY FEATURES

- A collection of intimate meeting rooms ideal for executive sessions and workshops
- Natural light with views of Sydney Harbour Bridge or Circular Quay
- Harbour 409, 411, 412 – Sydney Harbour Bridge views
- Opera 413, Quay 414 – Circular Quay views
- Boardroom or U-shape setups available
- Capacities ranging from 8 to 18 guests
- Customisable coffee, tea and canapé packages
- Located on Level 4

Venue hire starts from \$800.



LOBBY LOUNGE



The Lobby Lounge at Shangri-La Sydney is a versatile event and networking space designed for informal gatherings, event registration and cocktail-style receptions. Located on Level G, the venue features a relaxed lounge setting that encourages conversation and guest interaction.

The flexible open-plan space accommodates up to 200 guests and offers direct access to an outdoor terrace for seamless indoor-outdoor entertaining. Catering options include coffee, tea, light refreshments and canapé packages, with customised selections available. Ideal for pre-function events, networking sessions and casual receptions, the Lobby Lounge provides a welcoming and adaptable event space.

KEY FEATURES

- Relaxed lounge-style venue ideal for networking and cocktail receptions
- Flexible open-plan space accommodating up to 200 guests
- Ideal for event registration, pre-function gatherings and informal receptions
- Direct access to an outdoor terrace for indoor-outdoor entertaining
- Catering options including coffee, tea, light refreshments and canapé packages
- Customisable catering selections available
- Located on Level G

Venue hire starts from \$3,000.

VIRTUAL TOUR



ALTITUDE BREAKFAST BUYOUT



Altitude Restaurant offers an exclusive breakfast buyout option, ideal for private corporate events and early-morning gatherings. Located on Level 36, the space features uninterrupted views across Sydney Harbour, including the Sydney Opera House and Harbour Bridge.

Breakfast menus are available from \$38 per person. The venue accommodates up to 120 guests, including the Private Dining Room. Events must conclude no later than 10:00am. Long-table setups are available exclusively for breakfast buyouts.

KEY FEATURES

- Breakfast menus from \$38 per person
- Exclusive breakfast buyout on Level 36
- Longtable setup only
- Panoramic Sydney Harbour views
- Maximum capacity of 120 guests, including the Private Dining Room

Venue hire starts from \$7,000.

[VIRTUAL TOUR](#)



LEVEL 36 – RESIDENTIAL BUYOUT





Level 36 at Shangri-La Sydney is available for exclusive hire as part of the Residential programme, offering a premium event setting with uninterrupted views across Sydney Harbour, including the Sydney Opera House and Harbour Bridge. This option is suited to large-scale corporate events, incentive programmes and hosted dining or cocktail experiences.

Menu options include Altitude seasonal lunch, dinner or cocktail menus. The space may be configured for stand-up cocktail receptions or seated lunches and dinners, depending on client requirements. A minimum accommodation commitment and ballroom booking are required as part of the programme.

KEY FEATURES

- Exclusive Level 36 buyout for Residential MICE programmes
- Altitude seasonal lunch, dinner or cocktail menus available
- Cocktail (stand-up) or seated lunch and dinner formats
- Minimum accommodation requirement of 10 guest rooms per night
- Ballroom must be included in the overall event programme
- Panoramic harbour views
- Maximum capacity of 200 guests for cocktail-style events

Venue hire starts from \$60,000.

VIRTUAL TOUR



SPECIAL PACKAGES

CHARITY & ASSOCIATIONS PACKAGES

Designed for fundraising dinners and association gatherings.

- Priced from \$140 per person for a two-course menu
- Upgrade to a three-course menu from \$150 per person
- Pre-event drinks and beverage service
- Complimentary stage and personalised menus
- Ideal for large-scale charity and association events
- Minimum guest numbers apply
- Located in the Grand Ballroom on Level B

AWARD DINNER PACKAGE

A premium package for formal award nights and celebrations.

- Priced from \$150 per person for a two-course menu
- Upgrade to a three-course menu for \$165 per person
- Pre-dinner drinks for guests
- Extended beverage service throughout the evening
- Complimentary stage and personalised menus
- Two complimentary valet parking passes
- Designed for prestige and presentation
- Located in the Grand Ballroom on Level B



SCHOOL FORMAL & PROM NIGHT PACKAGES

Created for memorable milestone celebrations.

- Priced from \$95 per person for a two-course menu
- Upgrade to a three-course menu from \$115 per person
- Unlimited soft drinks
- Complimentary stage and dance floor
- Coloured chandelier lighting
- Two complimentary valet parking passes
- Minimum guest numbers apply
- Located in the Grand Ballroom on Level B

CHRISTMAS PARTY PACKAGES

Festive packages for end-of-year celebrations.

- Priced from \$109 per person for a two-course lunch menu
- Upgrade to a three-course lunch menu from \$120 per person
- Priced from \$129 per person for a two-course dinner menu
- Upgrade to a three-course dinner menu from \$140 per person
- Pre-event drinks and beverage service
- Complimentary stage and personalised menus
- Christmas crackers and festive centrepieces
- Available for lunch or dinner events
- Located in the Grand Ballroom on Level B
- Terms and conditions apply

CUSTOMISATION & ENHANCEMENTS

Available across all packages.

- Menus tailored to suit dietary requirements and preferences
- Alternate-serve options available (surcharges apply)
- Packages adaptable to suit event style, timing and budget
- Minimum guest numbers apply





SAMPLE MENU

DAY DELEGATE PACKAGE MENU

MORNING TEA

Spinach and feta pillows v

Assorted sablés, biscotti, and chocolate chip cookies v

LUNCH

Sundried tomato pesto, grilled eggplant and goats cheese mousse in a tomato wrap v, N
Hot salami, provolone, Roma tomatoes, baby spinach and honey mustard aioli in Schiacciata

Fusilli Aglio e Olio e Peperoncino vG

Beef Stroganoff GF

Italian garlic and thyme roasted vegetables vG, GF, DF

Ancient grain salad with Italian lemon dressing vG, DF

Citrus seafood salad with dill aioli GF, P

Tiramisu espresso and mascarpone mousse v

AFTERNOON TEA

Potato, corn, and Manchego cheese croquette v

Raspberry and hazelnut gâteau with raspberry coulis and vanilla cream v, N

(V)VEGETARIAN|(VG)VEGAN|(GF)GLUTENFREE
(DF)DAIRYFREE|(N)CONTAINS NUTS|(P)PESCATARIAN



CULINARY ORIGIN



ROOTED IN SUSTAINABILITY

Our banquet menus, developed by Executive Chef Brent Morley and his team, celebrate Australia's finest produce, guided by a strong commitment to provenance and responsible sourcing.

Guests can expect sustainably sourced seafood from Australian waters, premium meats from respected regional producers, and exceptional fruit and vegetables at their seasonal peak—each ingredient chosen for its quality and integrity.

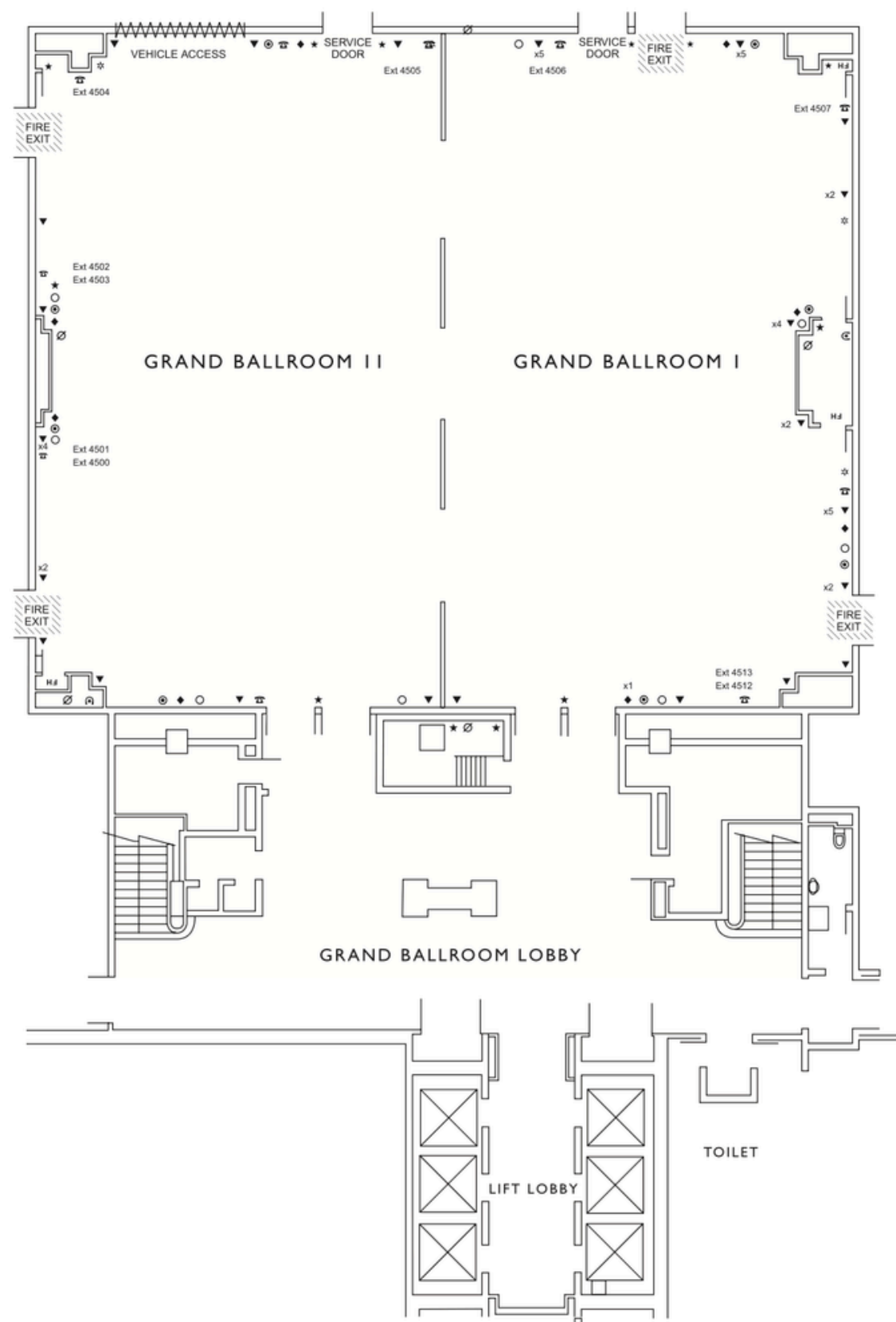
Signature ingredients are woven through the menus, from Humpty Doo Barramundi and CopperTree Farms cultured butter to Shangri-La Sydney's own Rooftop Honey, each bringing a true sense of place. Paired with artisan producers, from cheesemakers to specialist growers, their craftsmanship elevates every dish with depth, character, and distinction.

Together, these elements shape menus that move beyond expectation, with a focus on flavour, provenance and a strong sense of place, designed to bring a more thoughtful and engaging dining experience to every event.

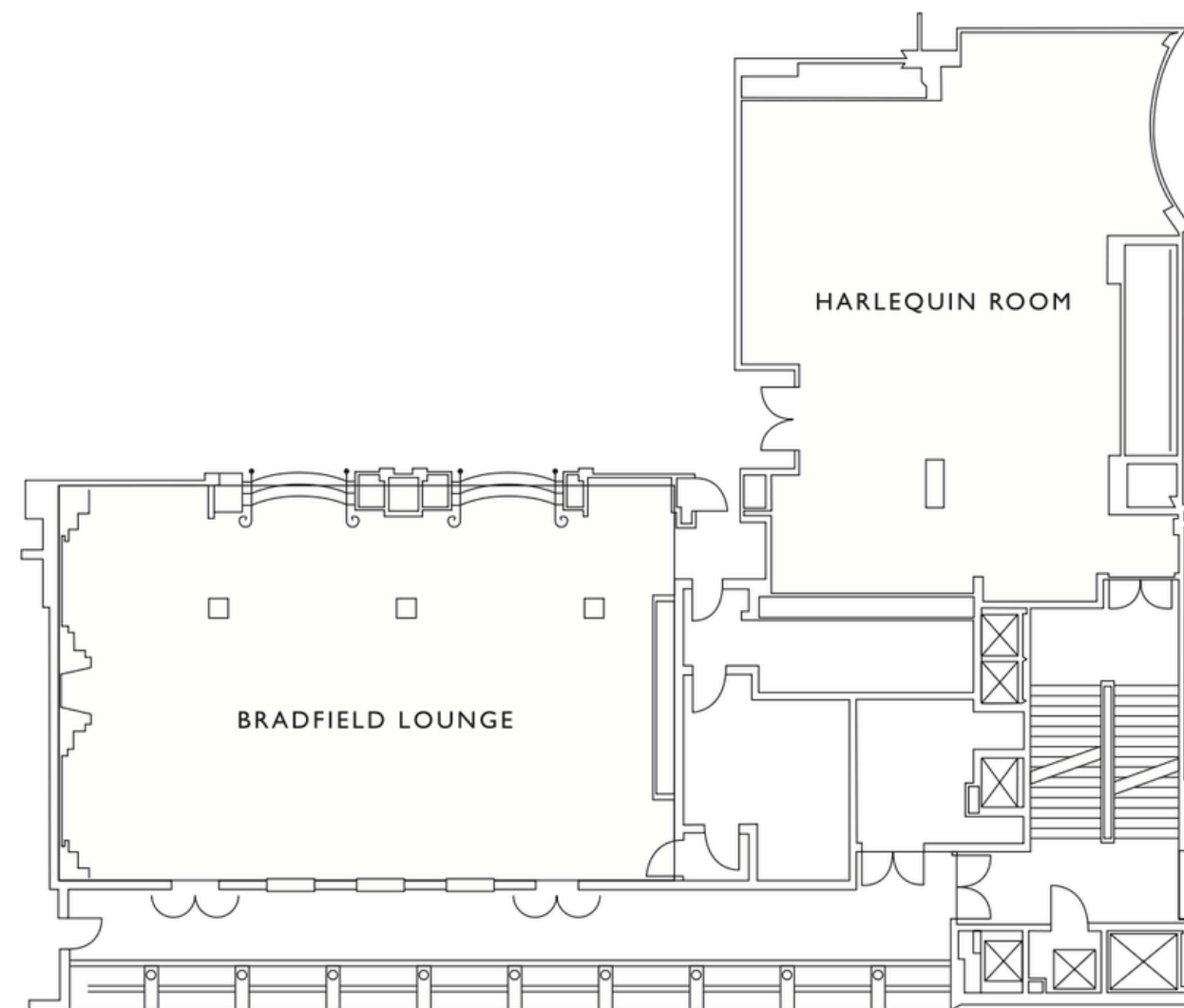


FLOOR PLANS

LEVEL B - BALLROOM



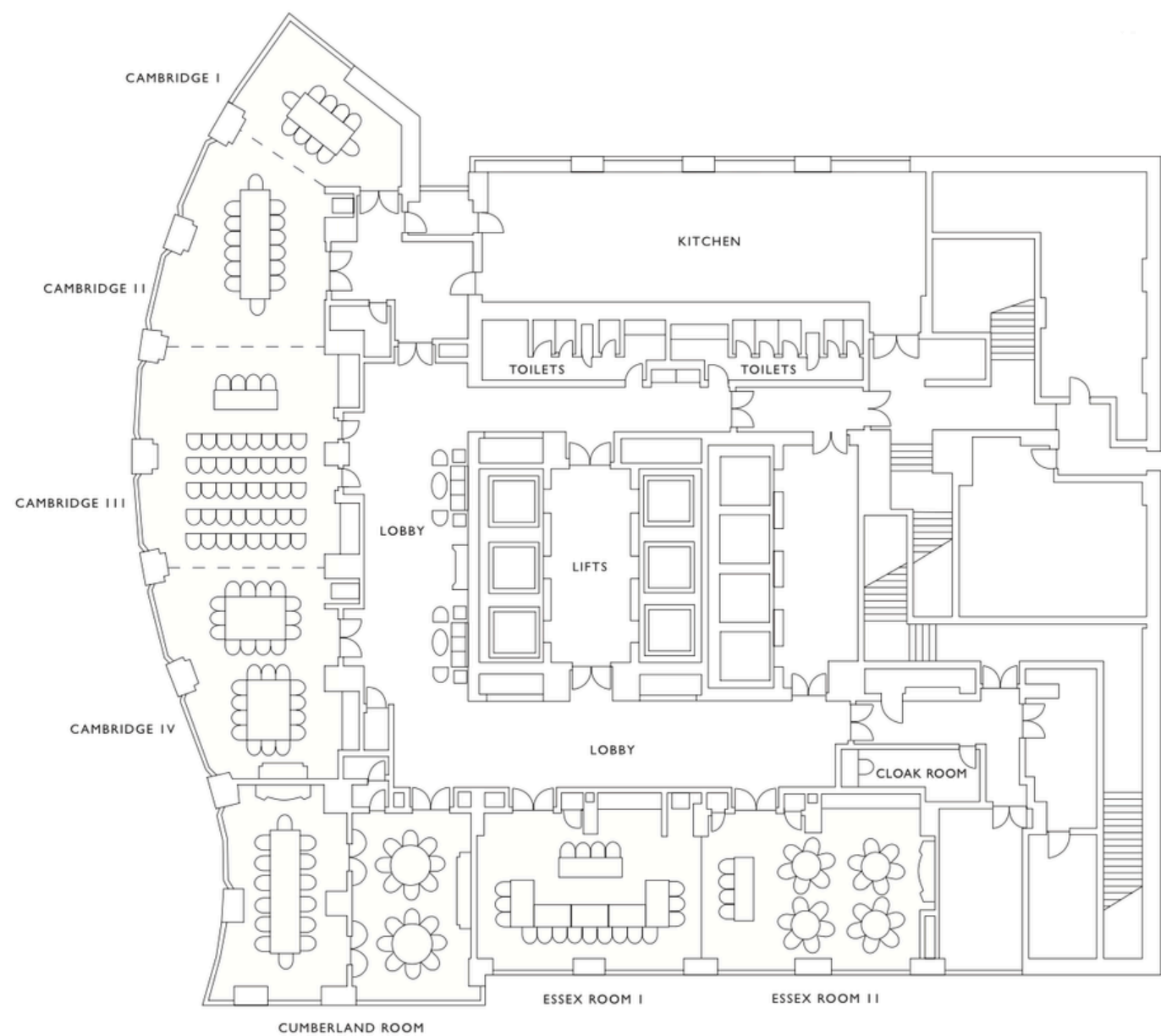
LEVEL 1 - FUNCTION ROOMS



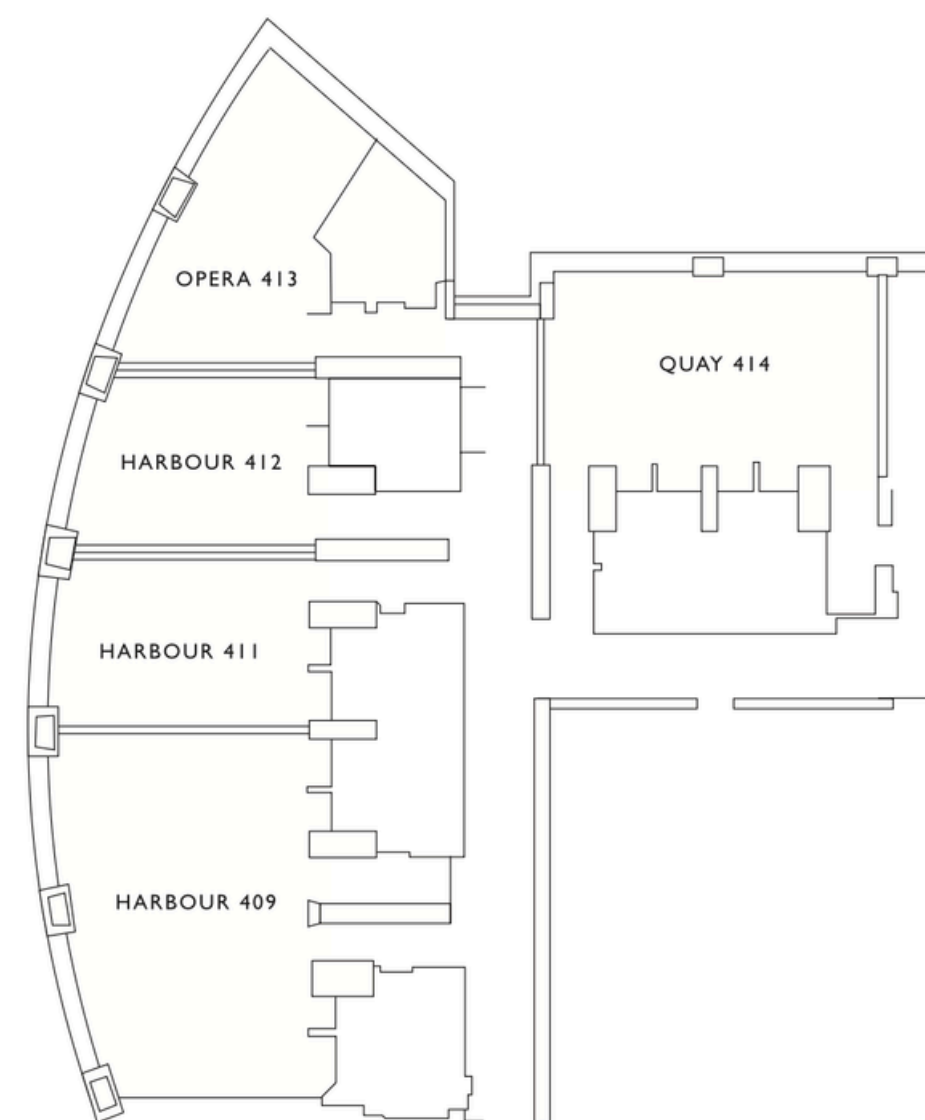


FLOOR PLANS

LEVEL 3 - FUNCTION ROOMS



LEVEL 4 - BREAKOUT ROOMS





For enquiries, please contact the events team via (02) 9250 6000 or events.slsn@shangri-la.com

Shangri-La Sydney, 176 Cumberland Street, The Rocks, Sydney NSW 2000

Shangri-La.com/Sydney