



## FACTS AND INFORMATION

SULE SHANGRI-LA, YANGON

## LOCATION

Sule Shangri-La, Yangon is located right in the central business district of Yangon, the economic capital and gateway of Myanmar. Nestled amidst the city's most popular cultural and shopping precincts, and surrounded by lush tropical greenery and beautiful lakes, the hotel is the perfect base for both business and leisure travellers alike. Sule Shangri-La, Yangon is an easy 45-minute drive from Yangon International Airport.

## ACCOMMODATION

The hotel comprises 484 expansive guestrooms and suites, each characterised by elegant contemporary décor and executive-style furnishings. Rooms come with a full array of amenities and facilities, spacious bathrooms and feature outstanding views of either the city, the pagoda or the river. For the more discerning business traveller, Horizon Club Rooms offer a host of additional privileges and an even higher level of personalised service.

## GUESTROOM FEATURES

- 24-hour room service
- Complimentary Wi-Fi Internet access
- Satellite / cable television
- Electronic safe
- Full-size executive writing desk
- International Direct Dial telephone
- Voice mail
- Stationery folder
- Hair dryer
- Iron and ironing board
- Crispy mint
- Coffee / tea-making facilities
- Mini-bar



## GUESTROOMS

Categories	Rooms	Area (m <sup>2</sup> )
Deluxe Room	275	34
Executive Room	56	34
Horizon Club Room	122	34
Deluxe Suite	14	66
Executive Suite	14	71
Club Suite	2	126
Presidential Suite	1	189

## HORIZON CLUB PRIVILEGES

- Horizon Club Room offers the highest floors and views
- Private check-in and check-out at Horizon Club Lounge on 21st floor
- Upon arrival, a Guest Relations Officer will personally handle your check-in smoothly and quickly at Club Lounge

All Horizon Club Rooms are equipped with:

- Full size executive writing desk complete with stationery
- Complimentary Wi-Fi Internet access
- Extra power points
- Castor chair for easier movement

Access to lounge facilities:

- Complimentary Wi-Fi Internet access
- Private meeting rooms
- Wide selection of newspapers, magazines and books

## BUSINESS CENTRE

The hotel houses a fully equipped business centre with personal computer workstation and broadband Internet connection. The business centre also provides a host of secretarial support including printer, scanner, photocopying, facsimile and courier services. A private room for small business meetings is also available.

## OTHER SERVICES AND FACILITIES

- Limousine service
- Laundry service
- Valet
- Basement parking
- Clinic
- Self-service ice machines on selected floors

## RECREATION FACILITIES

- Fitness centre
- Jacuzzi
- Sauna
- Steam room
- Swimming pool
- Beauty centre
- Massage rooms

## RESTAURANTS AND BARS

Restaurants / Bars	Capacity	Location	Cuisine
Café Sule	150	Lobby level	International / local cuisine
Summer Palace	210	Level 2	Chinese
Peacock Lounge	105	Lobby level	Light snacks / drink
Gallery Bar & Restaurant	70	Level 2	Cocktails / Western dining
Gourmet Shop	25	Lobby Level	Snacks and sweets
Pool Bar	40	Level 5	Western and Asian dining / drinks and cocktails

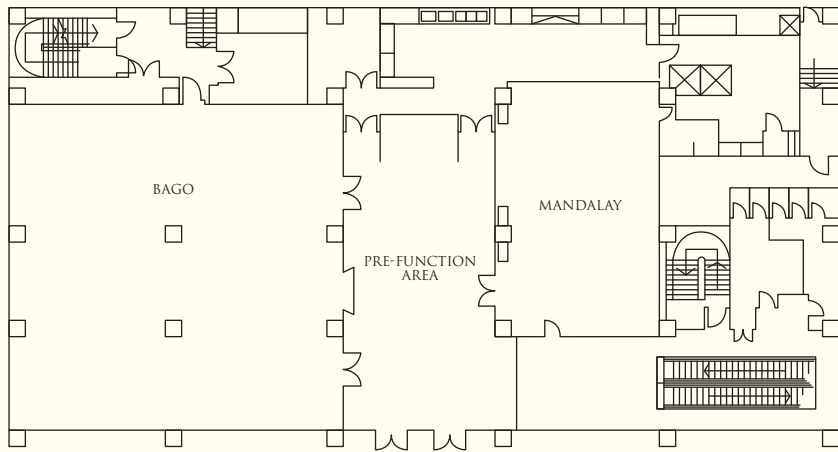
## BANQUET AND CONFERENCE ROOMS

Venue	Reception	Theatre	Capacity				VIP setup	Dimension (m)	Area (m <sup>2</sup> )	Ceiling Height (m)
			Banquet	Classroom	Boardroom					
<b>Level 1</b>										
Bago	180	300	140	105	•	•	16.2 x 16.5	267	3.0	
Mandalay	•	•	•	•	•	20	12.7 x 8.0	102	3.0	
Pre-Function Area	50	•	•	•	•	•	13.5 x 7.6	103	3.0	
<b>Level 2</b>										
Pre-Function Area	150	•	60	•	•	•	12.6 x 15.8	195	3.8	
Ballroom Foyer	100	•	60	•	•	•	5.5 x 28.0	135	3.8	
Ballroom I	150	250	120	126	•	•	12.4 x 23.5	290	7.0	
Ballroom II	200	420	240	210	•	•	20.0 x 23.5	470	7.0	
Myanmar Ballroom*	500	750	480	450	•	•	32.4 x 23.5	760	7.0	
Yangon	•	•	•	•	•	10	4.7 x 6.2	29	•	
<b>Level 3</b>										
Pre-Function Area	50	•	40	•	•	•	8.2 x 9.5	78	2.5	
Bagan	40	40	40	36	18	•	8.1 x 8.3	67	2.5	
Innwa	40	40	40	36	18	•	7.4 x 9.3	69	2.5	
Taung Ngu	40	40	40	36	18	•	9.3 x 9.0	83	2.5	
Innwa-Taung Ngu*	100	80	80	81	40	•	16.4 x 9.3	152	2.5	
Pinya	40	50	40	30	18	•	9.3 x 7.7	71	2.5	
Konbaung	60	50	40	36	20	•	10.0 x 8.1	80	2.5	
Tagaung	50	50	40	36	18	•	8.7 x 8.1	70	2.5	
Konbaung-Tagaung*	100	120	80	81	40	•	19.0 x 8.1	150	2.5	
Nyaung Yan	•	•	•	•	8	•	3.4 x 6.0	21	2.5	

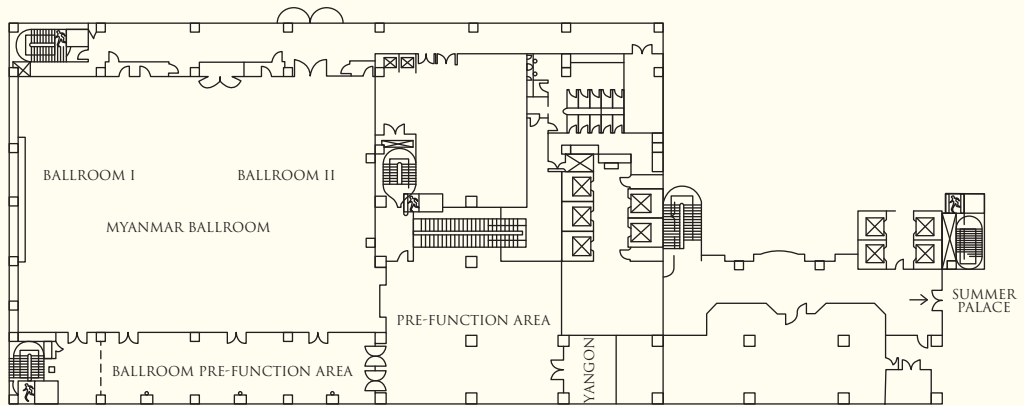
\* Connecting 2 rooms

Capacity shown above excludes set ups that may require a stage or dance floor

LEVEL 1

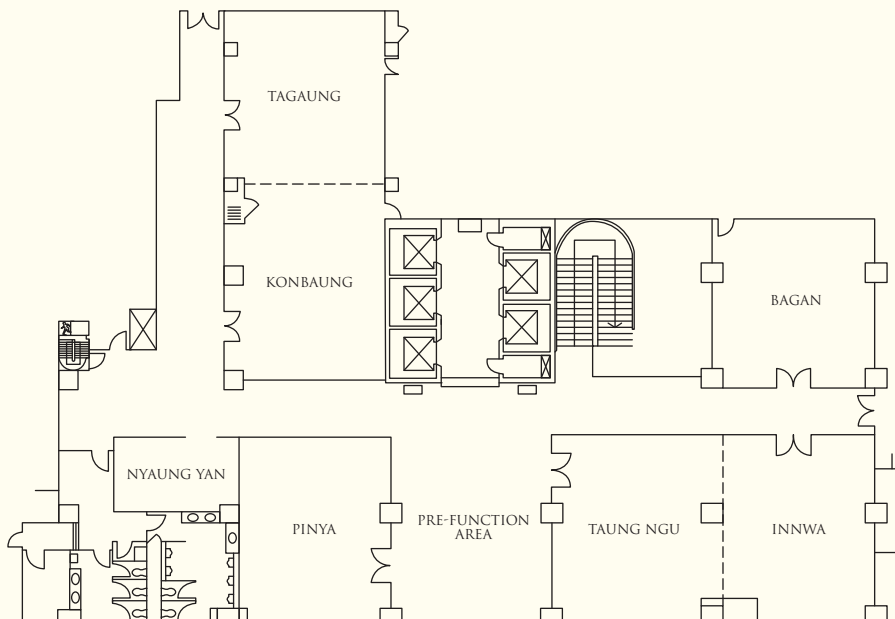


LEVEL 2



\* Note: All function areas are non-smoking

LEVEL 3



\* Note: All function areas are non-smoking



**SHANGRI-LA**

HOTELS *and* RESORTS

**Sule Shangri-La, Yangon**

223 Sule Pagoda Road, G.P.O. Box 888, Yangon, Myanmar

Tel: (95 1) 242 828 Fax: (95 1) 242 800 [ssyn@shangri-la.com](mailto:ssyn@shangri-la.com) [www.shangri-la.com](http://www.shangri-la.com)