

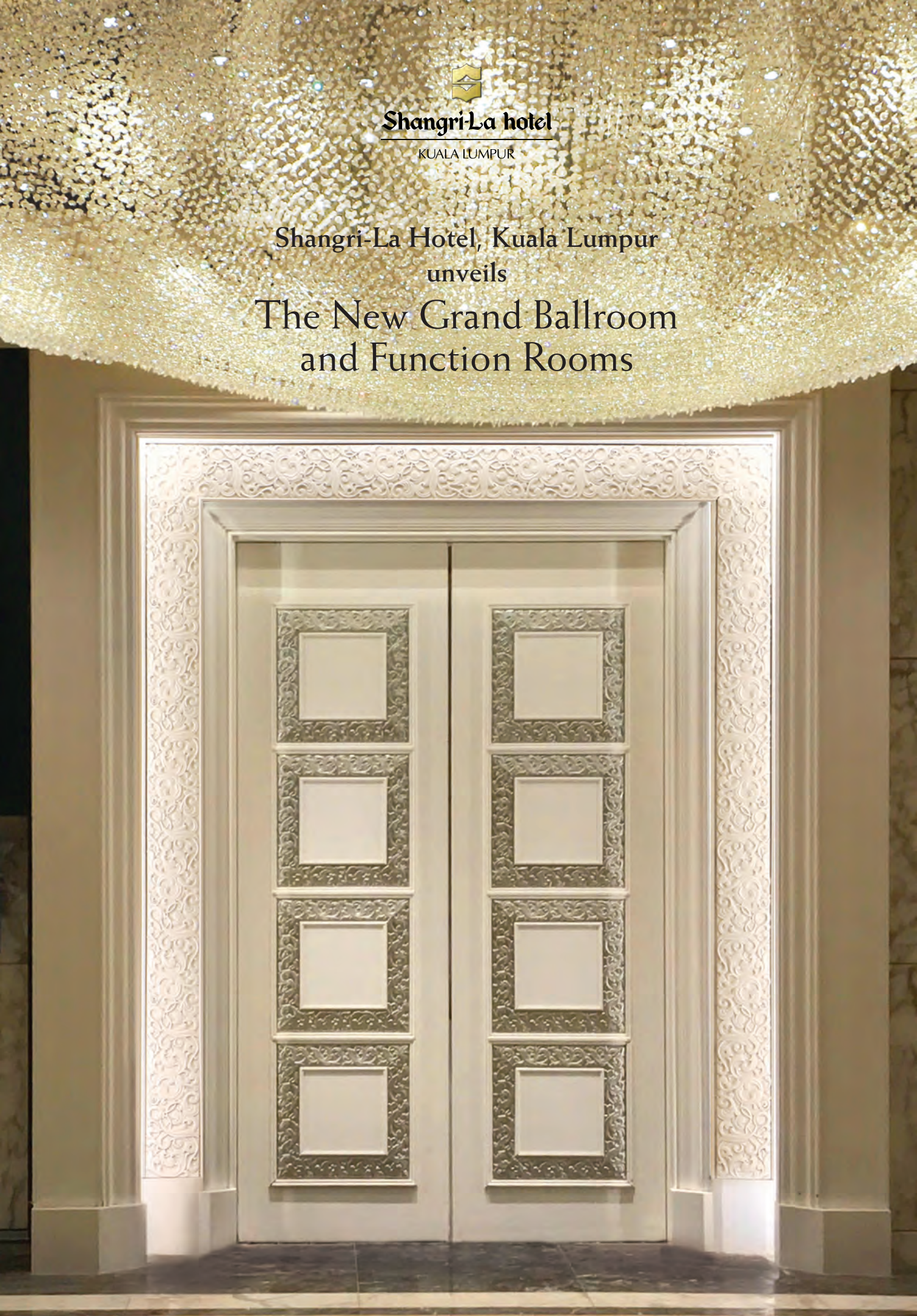


**Shangri-La hotel**

KUALA LUMPUR

Shangri-La Hotel, Kuala Lumpur  
unveils

# The New Grand Ballroom and Function Rooms





For the past 32 years, we have witnessed numerous celebrations of love and reunions, organised uncountable corporate events and played host to the most glamorous and prestigious of occasions.

The dawn of a new chapter begins at Shangri-La Hotel, Kuala Lumpur with our newly refurbished Grand Ballroom and Function Rooms. Located across three floors of the Hotel, our event spaces are ideal to host conventions, weddings, social and corporate events.

Our Function Rooms are meticulously designed with great flexibility as it can be tailor made to create the perfect space for big, grand events as well as small, intimate functions. All Function Rooms come equipped with complimentary Wi-Fi services and state-of-the-art audio-visual, lighting and communication systems.



### The Grandest of them all...

Our new Grand Ballroom, furnished with the latest in cutting edge technology is an icon of luxury, splendour and elegance.

- Total land area of 1,509 square metres
- Pillar-less event space with high ceilings
- Luxurious and stylish interior
- Grand elevated stage
- Complimentary Wi-Fi connection
- Three large LCD screens and two LED screens
- Dazzling crystal chandeliers
- Sophisticated lighting systems
- Superior audio-visual and communication systems
- Flexible partitioning features

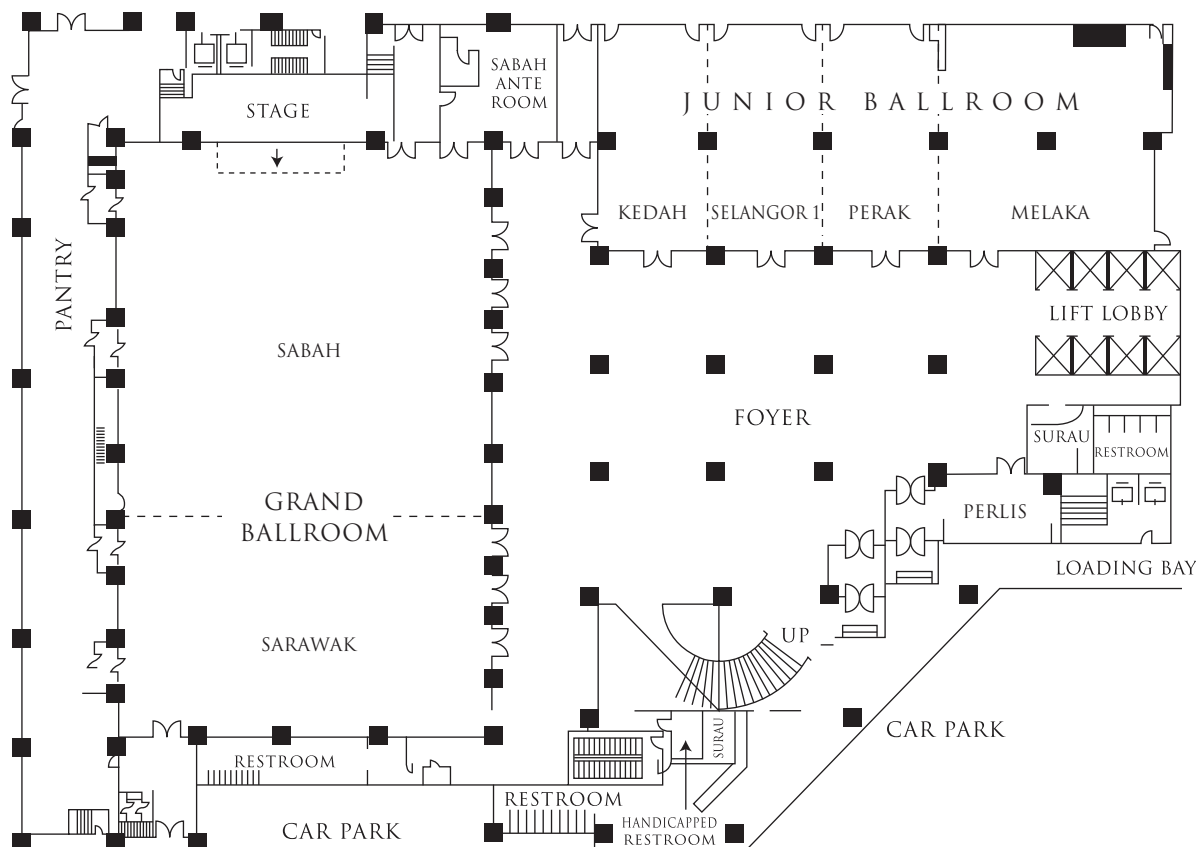
### A multitude of choices...

The 13 new Function Rooms featuring grand and contemporary décor are named after the different states in Malaysia.

- Event spaces ranging from 905 square metres to 45 square metres
- Multi divisible partitioning features for flexibility of space
- Opulent designs and elegant interior
- LCD screens
- Complimentary Wi-Fi connection
- Advanced lighting systems
- Top-notch audio-visual and communication systems

## BANQUET & FUNCTION ROOMS FLOOR PLAN & LAYOUTS

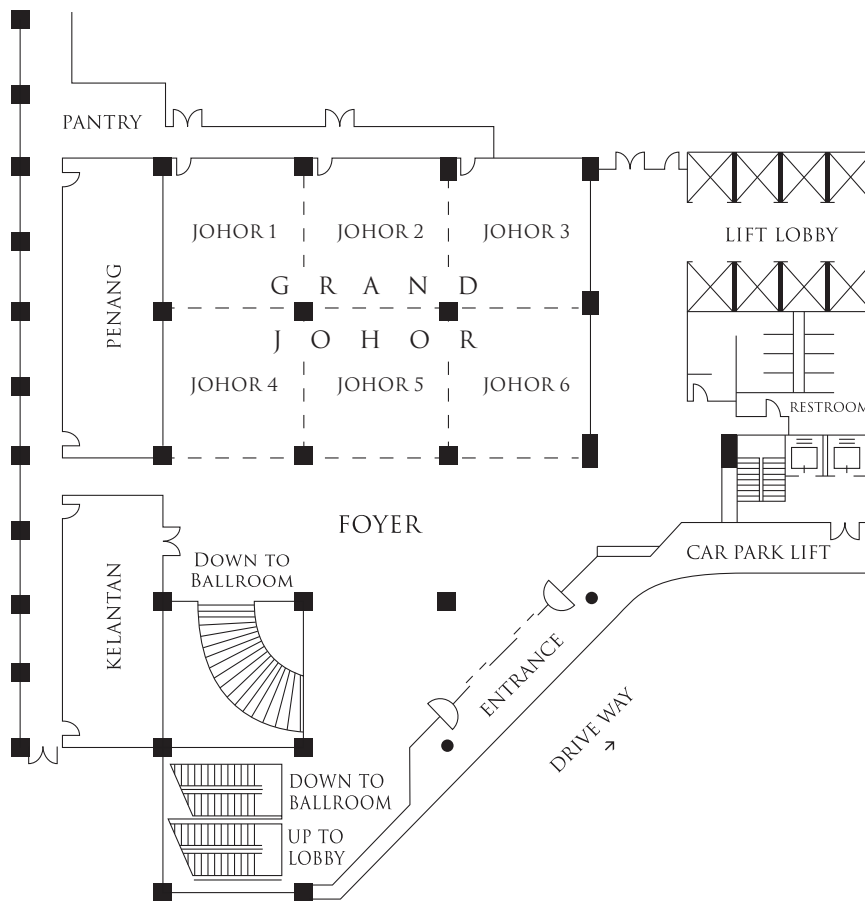
### BASEMENT II



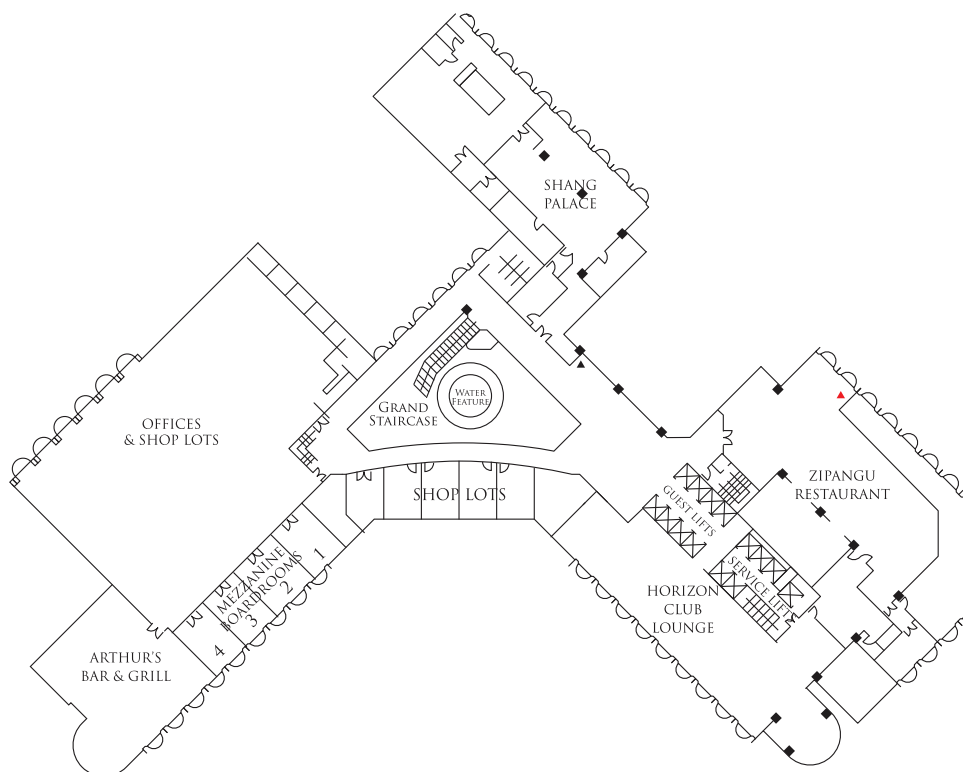
# BANQUET & FUNCTION ROOMS

## FLOOR PLAN & LAYOUTS

### LOWER LOBBY



### LEVEL I



## BANQUET & FUNCTION ROOMS INFORMATION

Venue	Capacity					Dimensions (WxL) (m)	Area (m <sup>2</sup> )	Ceiling Height (m)
	Reception	Theatre	Banquet	Classroom	Boardroom			
<b>Basement II</b>								
Grand Ballroom (Sabah + Sarawak)	1,800	1,800	1,440	660	-	34.7x43.5	1,509	6.7
Sabah	700	1,100	600	420	-	34.7x26.1	905	6.7
Sarawak	450	650	400	378	84	34.7x17.4	604	6.7
Junior Ballroom (Selangor Room + Melaka)	400	300	400	200	-	43x17.3	744	4
Selangor Room (Kedah + Selangor 1 + Perak)	360	270	340	160	-	26x17.3	449	4
Kedah	120	140	100	87	42	8.7x17.3	150	4
Selangor 1	120	140	100	87	42	8.7x17.3	150	4
Perak	120	140	100	87	42	8.7x17.3	150	4
Melaka	200	374	200	180	20	16.9x17.3	292	4
Perlis	25	30	27	18	18	8.7x5.2	45	4
Sabah Ante	-	60	40	36	18	9.6x8.3	80	3
Foyer	800	-	-	-	-	-	1,151	4
<b>Lower Lobby</b>								
Johore 1 / 2 / 3	45	60	40	33	18	8.7x7.1	61	3.7
Johor (Johore 1 + 2 + 3)	140	160	120	100	60	26x7.1	184	3.7
Grand Johor (Johore 1 + 2 + 3 + 4 + 5 + 6)	360	270	340	160	-	26x15.8	410	3.7
Johor 1+4 / 2+5 / 3+6	120	140	100	87	42	8.7x15.8	137	3.7
Kelantan	70	80	50	45	36	6.2x14.1	87	3.7
Penang	80	90	50	48	36	6.2x16.1	100	3.7
Foyer	400	-	-	-	-	-	620	3.7
<b>Level 1</b>								
Mezzanine 1,2&3	-	-	-	-	14	8.8x3.6	32	3.0
Mezzanine 4	-	-	-	-	8	3.5x5.7	20	3.0