



FACTS AND INFORMATION

SHANGRI-LA HOTEL, GUANGZHOU

## LOCATION

Shangri-La Hotel, Guangzhou is adjacent to the Guangzhou International Convention Centre, Perched on the banks of the Pearl River and surrounded by lush landscaped gardens. It is truly an urban oasis. The hotel is 45 minutes from the Baiyun International Airport and the South Railway Station, and 20 minutes from the East Railway Station. The tram beside the hotel provides easy access to the landmarks along the Pearl River, such as Exhibition Center Wharf, Party Pier Bar District, Canton Tower, and Zhujiang New Town Central Business District to all guests.



## ACCOMMODATION

Perfect for both business and leisure travelers, the hotel comprises of 704 expansive guestrooms and suits, all featuring high speed wireless and wired Internet access, flat screen televisions and magnificent views of the tranquil Pearl River or the hotel's lush landscaped gardens. For longer staying guests there are also 26 fully serviced apartments.

## GUESTROOMS

| Categories                            | Rooms | Area (m <sup>2</sup> ) |
|---------------------------------------|-------|------------------------|
| Deluxe Room                           | 230   | 42                     |
| Deluxe River View Room                | 196   | 42                     |
| Premier River View Room               | 124   | 42                     |
| Horizon Deluxe Room                   | 41    | 44                     |
| Horizon Deluxe River View Room        | 48    | 44                     |
| Executive Suite                       | 54    | 87                     |
| Horizon Premier Suite                 | 5     | 131                    |
| Horizon Deluxe Suite                  | 2     | 174                    |
| Horizon Grand Deluxe Suite            | 2     | 218                    |
| Yangcheng Suite (Speciality Suite)    | 1     | 261                    |
| Shangri-La Suite (Presidential Suite) | 1     | 305                    |

## GUESTROOM FEATURES

- Wireless and wired broadband Internet access
- 24-hour in-room dining
- Tea / coffee making facilities
- Mini-bar and refrigerator
- In-room safe deposit box suitable for laptops
- IDD telephones with voice mail and dual lines
- Full size executive writing desk
- Iron and ironing board
- Cable television with extensive news and movie channels
- 46- to 49-inch LCD TV with in-room entertainment system
- 19-inch LCD TV in the bathroom  
(all suites, Horizon Club rooms and serviced apartments)
- DVD player (all suites and serviced apartments)

## HORIZON CLUB PRIVILEGES

Located on floors 31 to 36, the Horizon Club provides a host of exclusive benefits including:

- Private check-in and check-out at the Horizon Club Lounge on the 34th floor
- Full use of the Horizon Club Lounge from 6:30am to 11pm
- Buffet breakfast, evening cocktails and hors d'oeuvres
- Wireless Internet access in the Horizon Club Lounge
- Coffee, juice and soft drinks throughout the day
- Pressing of one suit and shoeshine service upon arrival
- Use of private meeting room for up to two hours a day
- Daily international newspaper and fresh fruits
- Concierge services

## CHI, THE SPA AT SHANGRI-LA

CHI, The Spa at Shangri-La Hotel, Guangzhou transports guests into a world of quiet reflection as they traverse the lotus ponds to a collection of 11 luxuriously appointed suites. The spa's signature treatment is the Oriental Pearl Radiance Facial, involving a pressure point face massage with pearl powder, known in Traditional Chinese Medicine for its cooling properties.

## BUSINESS CENTRE

The fully equipped business centre offers a wide selection of business support services including faxing, photocopying, translation and even business card printing. There are two meeting rooms, two offices and three Internet rooms available, all with state-of-the-art facilities.

## RECREATION FACILITIES

- Health club
- Jacuzzi, sauna and steam bath
- Indoor and outdoor swimming pools with separate children's pools
- 12 acres of landscaped garden
- Rooftop tennis courts
- Jogging track along the Pearl River

## OTHER SERVICES AND FACILITIES

- Wireless Internet access in all public areas
- Laundry and valet service
- Courier, parcel and postal services
- Chauffeur-driven limousine
- Facilities for the physically challenged
- Outdoor and underground car park
- Concierge desk
- Florist

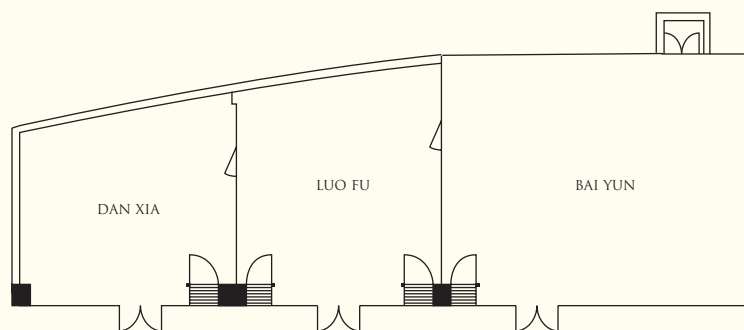
## RESTAURANTS AND BARS

| Restaurants / Bars       | Capacity | Location | Cuisine              |
|--------------------------|----------|----------|----------------------|
| WOK TOO Café             | 278      | Level 1  | International        |
| Summer Palace            | 238      | Level 2  | Chinese              |
| Nadaman                  | 118      | Level 3  | Japanese             |
| RIBS                     | 84       | Level 2  | International        |
| S. E. Asia Kitchen & Bar | 111      | Level 2  | Southeast Asia       |
| Lobby Lounge             | 106      | Level 1  | Snacks and beverages |

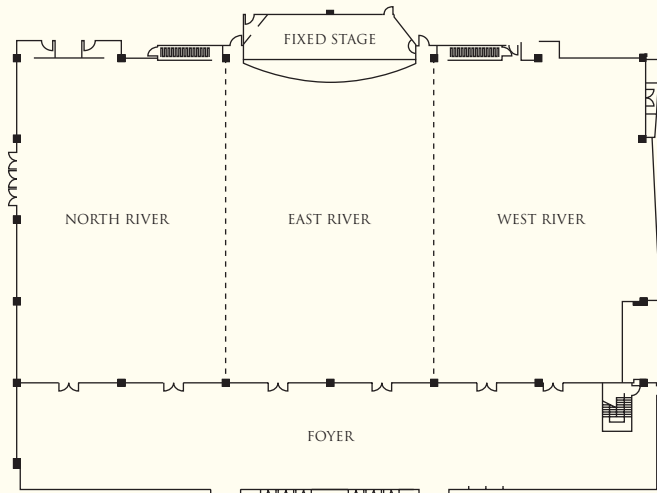
## BANQUET AND CONFERENCE ROOMS

| Venue                      | Capacity  |         |         |           | Dimensions<br>(m) | Area<br>(m <sup>2</sup> ) | Ceiling Height<br>(m) |
|----------------------------|-----------|---------|---------|-----------|-------------------|---------------------------|-----------------------|
|                            | Reception | Theatre | Banquet | Classroom |                   |                           |                       |
| <b>Level 1</b>             |           |         |         |           |                   |                           |                       |
| Pearl River Grand Ballroom | 2,200     | 3,000   | 1,280   | 1,344     | 64 x 35           | 2,240                     | 11.0                  |
| North River                | 700       | 936     | 400     | 384       | 35 x 21           | 735                       | 11.0                  |
| East River                 | 700       | 936     | 400     | 384       | 35 x 21           | 735                       | 11.0                  |
| West River                 | 700       | 960     | 400     | 384       | 35 x 21           | 735                       | 11.0                  |
| Foyer                      | •         | •       | •       | •         | 54 x 11           | 600                       | 11.0                  |
| Dan Xia                    | 50        | 35      | 30      | 18        | 8 x 7             | 56                        | 3.8                   |
| Luo Fu                     | 60        | 42      | 30      | 24        | 8 x 9             | 64                        | 3.8                   |
| Bai Yun                    | 90        | 108     | 60      | 60        | 13 x 8            | 104                       | 3.8                   |
| <b>Level 3</b>             |           |         |         |           |                   |                           |                       |
| Guangzhou Ballroom         | 827       | 1,196   | 540     | 480       | 35 x 26           | 910                       | 7.3                   |
| Xiang Jian Huan            | 200       | 220     | 120     | 105       | 17 x 13           | 221                       | 7.3                   |
| Man Jiang Hong             | 200       | 220     | 120     | 105       | 17 x 13           | 221                       | 7.3                   |
| Bu Bu Gao                  | 400       | 460     | 240     | 310       | 26 x 17           | 442                       | 7.3                   |
| Foyer                      | •         | •       | •       | •         | 42 x 9            | 378                       | 7.3                   |
| Auditorium                 | •         | 105     | •       | •         | 24 x 13           | 312                       | 3.5                   |
| Xi Qiao                    | 80        | 64      | 40      | 39        | 10 x 9            | 90                        | 3.5                   |
| Gui Feng                   | 80        | 64      | 40      | 39        | 10 x 9            | 90                        | 3.5                   |
| Lian Hua                   | 118       | 128     | 60      | 60        | 13 x 10           | 130                       | 3.5                   |
| Ding Hu                    | 106       | 100     | 60      | 50        | 13 x 9            | 117                       | 3.5                   |
| Tian Lu                    | 140       | 160     | 80      | 60        | 13 x 12           | 156                       | 3.5                   |

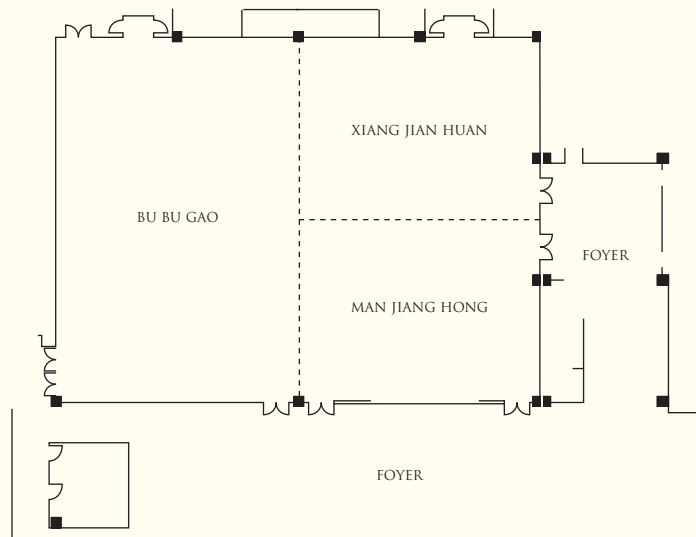
## FUNCTION ROOMS (1/F)



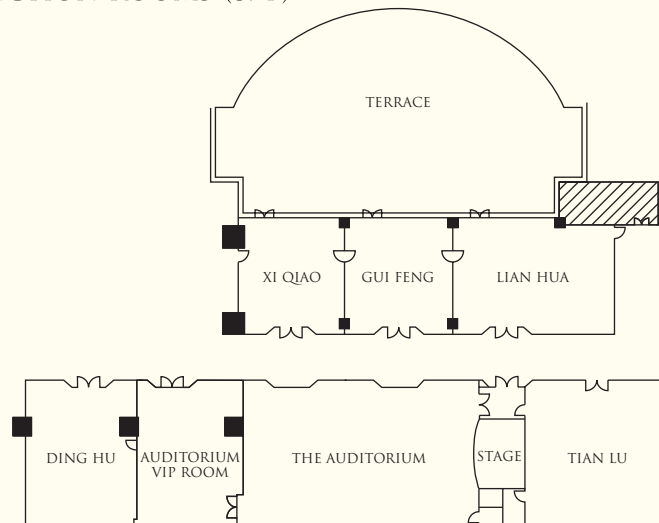
PEARL RIVER GRAND BALLROOM (1/F)



GUANGZHOU BALLROOM (3/F)



AUDITORIUM & FUNCTION ROOMS (3/F)





**SHANGRI-LA**

HOTELS *and* RESORTS

Shangri-La Hotel, Guangzhou

1 Hui Zhan Dong Road, Hai Zhu District, Guangzhou 510308, China

Tel: (86 20) 8917 8888 Fax: (86 20) 8917 8899 [slpg@shangri-la.com](mailto:slpg@shangri-la.com) [www.shangri-la.com](http://www.shangri-la.com)