

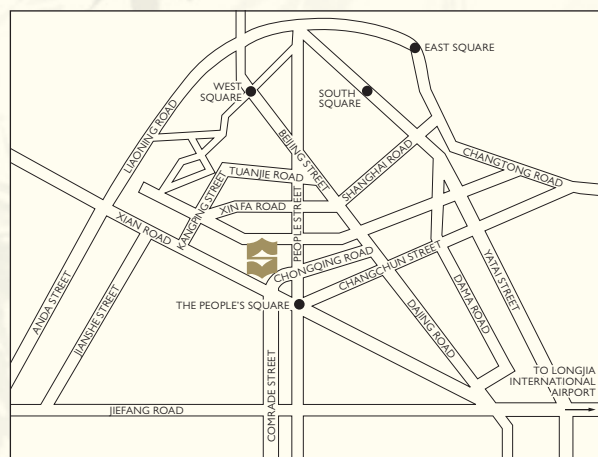


FACTS AND INFORMATION

SHANGRI-LA HOTEL, CHANGCHUN

LOCATION

Shangri-La Hotel, Changchun is conveniently located at the junction of Chongqing Road and Xian Road, right in the centre of the city's financial, business and entertainment district. The hotel is only a 50-minute drive from the Changchun Longjia International Airport and 15 minutes from the Changchun Railway Station.



ACCOMMODATION

The hotel comprises 458 spacious and contemporary guestrooms and suites characterised by warm soothing tones. Deluxe rooms feature panoramic views of the city skyline. State of the art amenities, bed linens and bath accessories ensure a truly luxurious experience. There are also 98 luxurious serviced apartments for longer-staying guests and 45 units of office space for rent.

GUESTROOMS

Categories	Rooms	Area (m ²)
Superior Room	165	36
Deluxe Room	172	36
Executive Suite	36	75
Horizon Club Room	80	36
Disabled Room*	2	36
Specialty Suite	4	148
Presidential Suite	1	185

*Included in Superior Room

GUESTROOM FEATURES

The luxuriously appointed rooms include:

- 24-hour in-room dining
- Complimentary broadband and Wi-Fi Internet access
- International direct-dialing telephone with voice mail and bathroom extension
- 32 to 46-inch LCD screen television with satellite and cable
- Spacious executive writing desk with data port
- Feather duvets
- Choice of pillows
- Selection of fine teas
- Iron and ironing board
- Selection of bath accessories
- Turndown service
- Mini-bar and refrigerator
- Coffee / tea making facilities
- Electronic locker
- Hairdryer

HORIZON CLUB PRIVILEGES

- Horizon Club concierge and secretarial services
- Private check-in and check-out in the Horizon Club Lounge

With our compliments:

- À la carte and buffet breakfast in the Horizon Club Lounge
- All-day refreshments in the Horizon Club Lounge
- Daily local newspaper and fresh seasonal fruit
- Evening cocktails and hors d'oeuvres in the Horizon Club Lounge (5:30pm to 7:30pm)
- In-room wired Internet and Wi-Fi access in the Horizon Club Lounge and guestrooms
- Late check-out until 4pm (subject to availability)
- Pressing of one suit upon arrival and shoeshine service
- Use of the Horizon Club Lounge private meeting room for two hours daily (advance reservation is required)

RECREATION FACILITIES

- Gymnasium
- Jacuzzi
- Sauna and steam bath
- Massage facilities
- 21m x 7m indoor swimming pool
- Outdoor tennis court (summer only)

RESTAURANTS AND BARS

Restaurants / Bars	Capacity	Location	Cuisine
Shang Palace	201	Level 2	Cantonese and Dongbei dishes
Shen Café	172	Level 1	International buffet and à la carte
Lobby Lounge	92	Level 1	Beverage and snacks

BUSINESS CENTRE

The business centre provides a host of professional secretarial support including translation, photocopying, courier, Internet and facsimile services. Guest may also make use of personal computers and other office equipment as well as a meeting room.

OTHER SERVICES AND FACILITIES

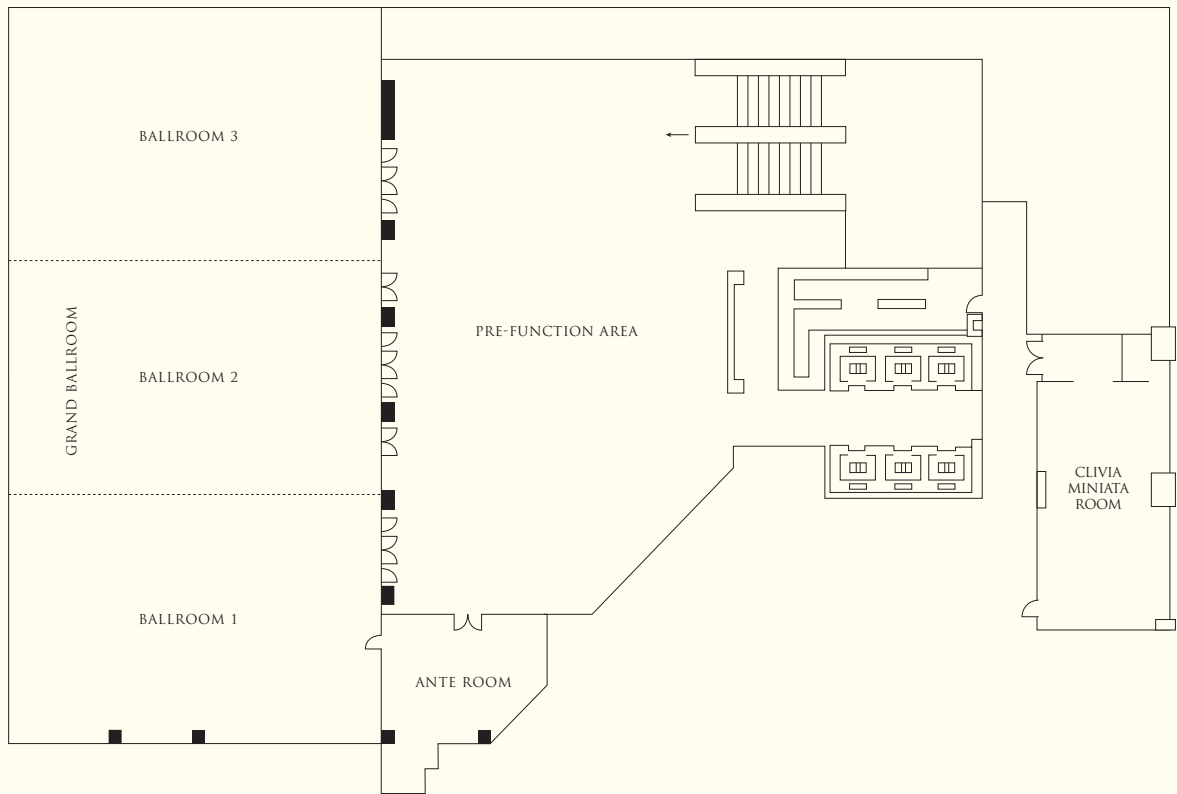
- Shops
- Safe-deposit boxes
- Complimentary Wi-Fi Internet access in public area
- Wedding and restaurant reservation centre
- Hotel basement parking
- Complimentary Wi-Fi Internet access in hotel limousine
- Non-smoking rooms
- Complimentary use of baby cot
- Complimentary shoeshine service
- Parcel and postal courier service
- Medical assistance
- Same day laundry and valet service
- Limousine services
- Baby-sitting services
- Tour and travel guide service
- Outside catering
- 24-hour butler service
- IT butler

BANQUET AND CONFERENCE ROOMS

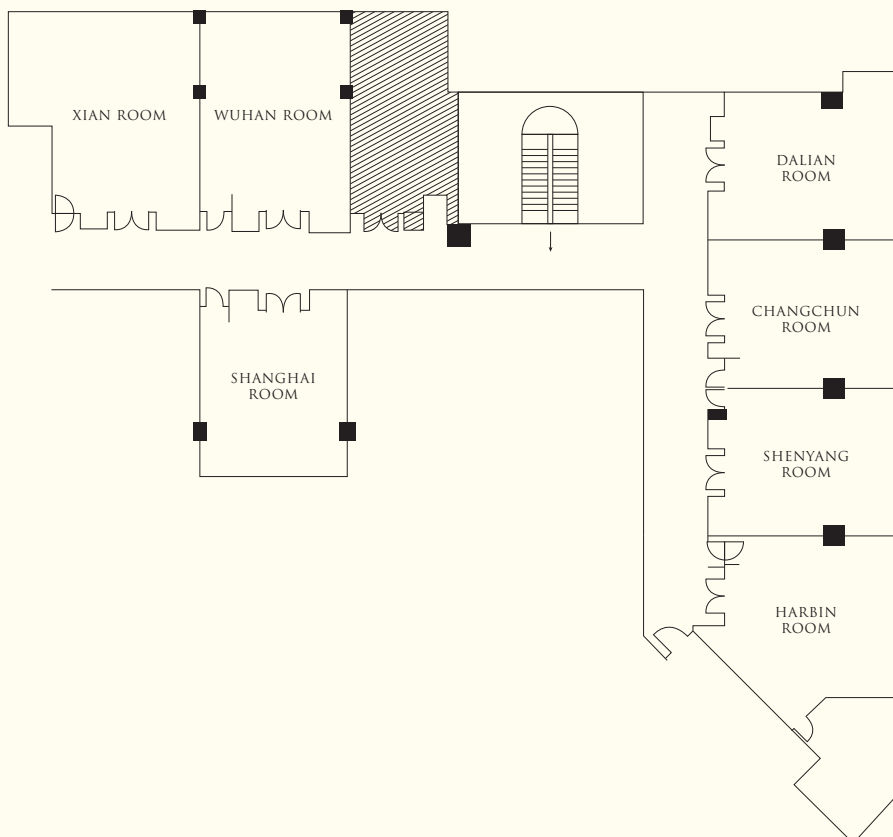
Venue	Capacity				Classroom	Dimensions (m)	Area (m ²)	Ceiling Height (m)
	Reception	Theatre	Banquet					
Level 2								
Grand Ballroom	800	900	600	600	21 x 42	882	7	
Pre-Function Area	•	•	•	•	17 x 30	510	3.4	
Ballroom 1	150	300	150	200	21 x 15	315	7	
Ballroom 2	150	300	150	200	21 x 12	252	7	
Ballroom 3	150	300	150	200	21 x 15	315	7	
Ante Room	•	•	•	•	9 x 7.2	65	3.4	
Clivia Miniata Room	50	60	50	45	14 x 8	112	3.4	
Level 3								
Shanghai Room	20	40	36	30	8 x 10	80	3	
Xian Room	40	60	50	50	9 x 12	108	3.4	
Wuhan Room	30	60	40	50	12 x 8	96	3.4	
Dalian Room	20	40	36	30	8 x 10	80	3.4	
Shenyang Room	20	40	36	30	8 x 10	80	3.4	
Changchun Room	20	40	36	30	8 x 10	80	3.4	
Harbin Room	20	40	36	30	7.2 x 10	72	3.4	

* The capacity may vary according to different setup requirements.

LEVEL 2



LEVEL 3





SHANGRI-LA

HOTELS *and* RESORTS

Shangri-La Hotel, Changchun

569 Xian Road, Changchun, 130061, China

Tel: (86 431) 8898 1818 Fax: (86 431) 8898 1919 slcc@shangri-la.com www.shangri-la.com