

## LOCATION



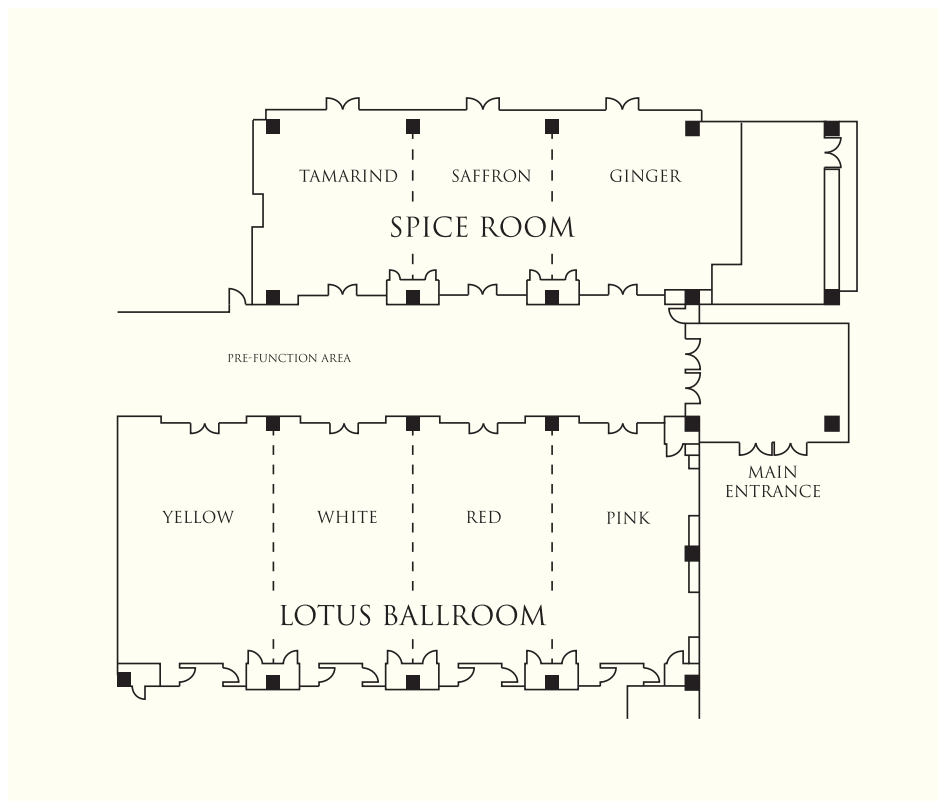
Situated in a prime waterside location and offering uninterrupted views of the Indian Ocean, Shangri-La Hotel, Colombo is in the heart of the financial and business district, as well as a buzzing social hotspot with a rich history. The hotel is located between Beira Lake and the Galle Face Green promenade, and is part of a new lifestyle development including an office tower, two residential towers and a high-end shopping mall.

Shangri-La Hotel, Colombo is minutes away from the largest exhibition centre in the country, as well as local shops, restaurants and casinos, and is a 45-minute drive from Bandaranaike International Airport.

## LEVEL I FLOOR PLAN & LAYOUTS



### Spice Room & Lotus Ballroom Level I



- Large number of adjacent meeting rooms with various options for partitions
  - Separate access for guests from ground floor
    - Natural light in Spice rooms
    - State-of-the-art built-in AV equipment
- Easy access from Shangri-La Ballroom through escalator and elevators

## BANQUET & CONFERENCE ROOM INFORMATION



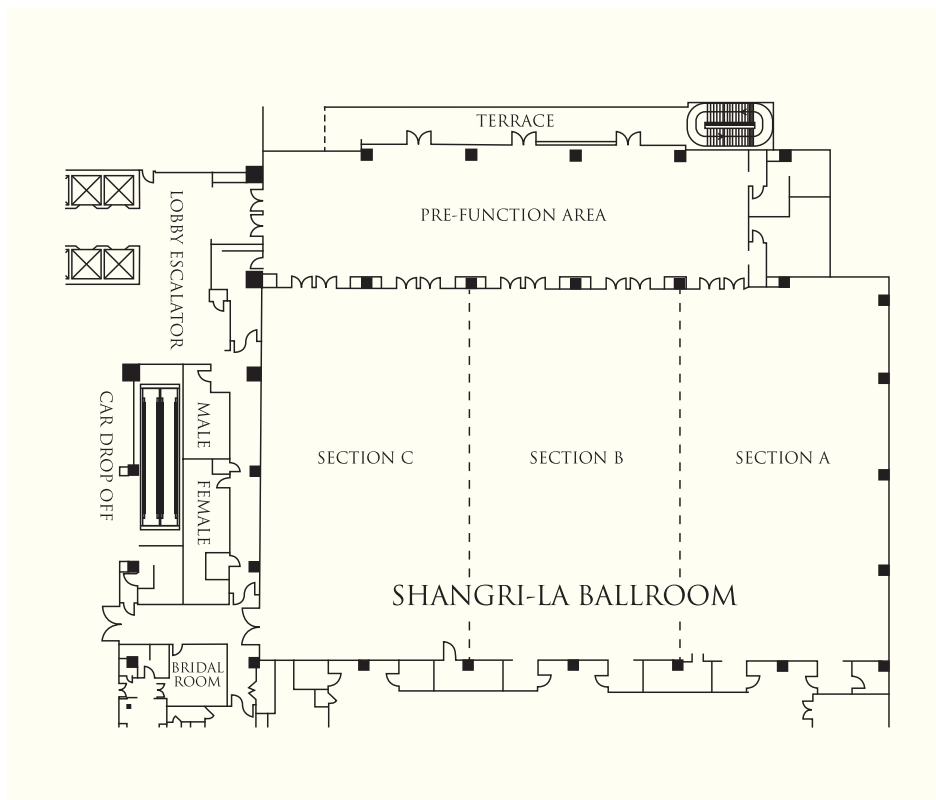
### Spice Rooms & Lotus Ballroom Level I

Venue	Reception	Theatre	Banquet	Classroom	U-Shape	Boardroom	Dimensions (m)	Area (m <sup>2</sup> )	Ceiling Height (m)
Spice Room	200	160	211	45	90	96	10.9 x 27.5	300	4.25
Tamarind	80	93	72	27	36	39	10.9 x 10.2	110	4.25
Saffron	80	93	48	27	36	39	10.9 x 8.6	90	4.25
Ginger	80	93	48	27	36	39	10.9 x 8.6	90	4.25
Pre-function	-	-	-	-	-	-	5.7 x 37	210	4.25
Lotus Ballroom	600	504	384	234	108	123	14.0 x 34.2	470	4.25
Pink	150	126	96	54	36	40	14.0 x 8.1	110	4.25
Red	150	126	96	54	36	40	14.9 x 8.5	110	4.25
White	150	126	96	54	36	40	14.0 x 8.5	110	4.25
Yellow	150	126	96	54	36	40	14.0 x 8.6	120	4.25

## BALLROOM FLOOR PLAN & LAYOUTS



### Shangri-La Ballroom Level 2



- Largest ballroom in Sri Lanka
- Natural light in Shangri-La Ballroom (section A) and pre-function foyer
- State-of-the-art built-in AV equipment
- Can be partitioned into 3 sections to use as break away rooms
- Direct access from a separate entrance
- 7 metres ceiling height

## BANQUET & CONFERENCE ROOM INFORMATION

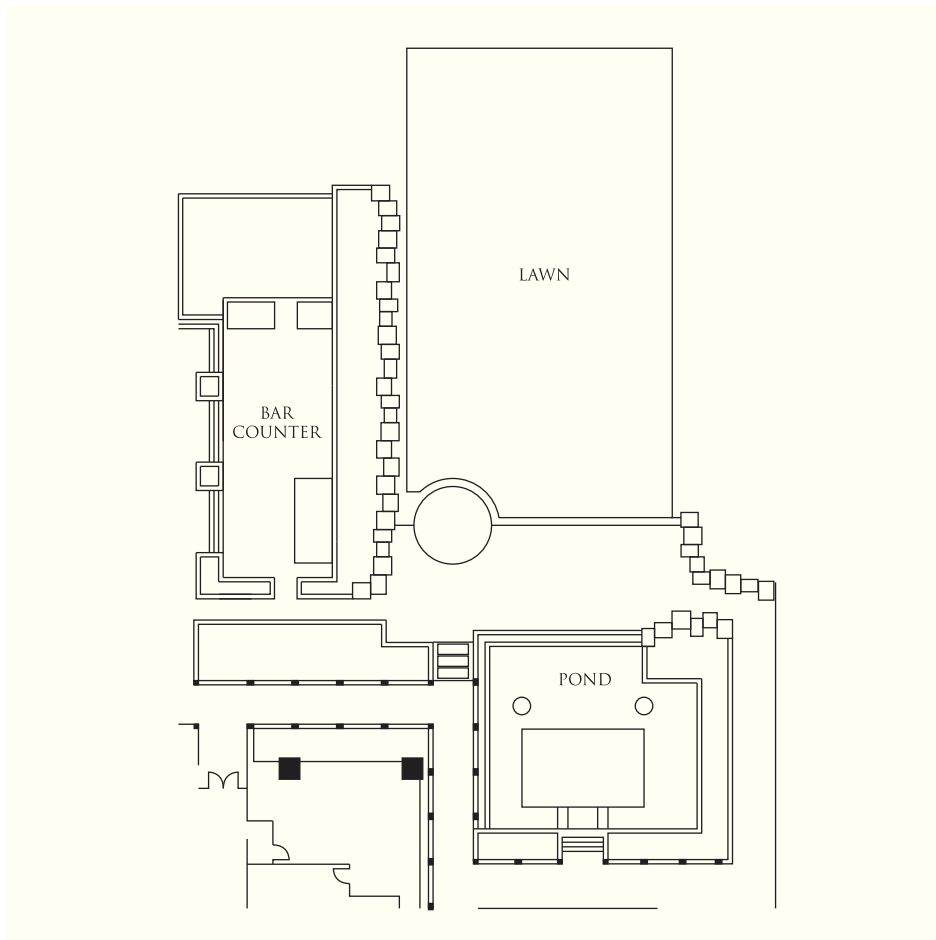


### Shangri-La Ballroom Level 2

Venue	Reception	Theatre	Banquet	Classroom	U-Shape	Boardroom	Dimensions (m)	Area (m <sup>2</sup> )	Ceiling Height (m)
Shangri-La Ballroom	3000	2500	1440	924	171	186	31.0 x 51.0	1580	7
Section A	800	750	480	273	93	111	31.0 x 17.0	520	7
Section B	800	750	480	273	93	111	31.0 x 18.0	540	7
Section C	800	750	480	273	93	111	31.0 x 17.0	510	7
Pre-function Area	-	-	-	-	-	-	10.3 x 41.0	425	7

## LEVEL 4 FLOOR PLAN & LAYOUTS

### The Lawn Level 4



- One of the largest outdoor spaces in Colombo, located on a high floor
- Option of air-conditioned marquee
- Elevated area ideal for wedding ceremonies
- Panoramic view of the city

## BANQUET & CONFERENCE ROOM INFORMATION

### The Lawn Level 4

Venue	Reception	Theatre	Banquet	Classroom	U-Shape	Boardroom	Dimensions (m)	Area (m <sup>2</sup> )	Ceiling Height (m)
Outdoor Lawn	750	650	420	-	-	-	18.0 x 31.0	500	-

MEETINGS WITH MORE



UNIQUE DESTINATION EVENTS



**Journey from Serendib to Sri Lanka**

Sri Lanka with its rich colonial past of the Portuguese, Dutch and British rulers, has accumulated some of the finest traditions and style in living that are still an intrinsic part of the island's vibrant culture today. We recreate the grandeur of a bygone era as you celebrate a journey through time with an intimate banqueting experience.

Seat yourself under our glittering chandelier as waiters clad in traditional colonial attire serve you. Our menu features treasures that drew traders to the shores of this island – aromatic native spices in each dish, creative beverages infused with pure Ceylon tea and of course the island's stunning gems now presented as jewelled chocolates and desserts.

Each course on the menu will feature a specific country, letting your taste buds travel through classic Portuguese cuisine to contemporary Sri Lankan delights.

From the live entertainment to the pretty décor at your table, revel in the finest offerings of this wondrous island.