



## FACTS AND INFORMATION

SHANGRI-LA HOTEL, COLOMBO

## LOCATION

Situated in the heart of the business and entertainment district, Shangri-La Hotel, Colombo offers stunning views of the Indian Ocean, Beira Lake and cityscape and is also the dining and social hotspot of the city. The hotel is part of Colombo's first integrated lifestyle development encompassing One Galle Face Mall with direct access from the hotel's lobby, The Residences at One Galle Face and the One Galle Face Office Tower (opening soon).

The hotel is adjacent to the city centre's only helipad and is a 45-minute drive from Bandaranaike International Airport, the country's main airport.

## ACCOMMODATION

Shangri-La Hotel, Colombo features the most comfortable and luxurious rooms in the city. Exuding a sense of Oriental elegance, the 500 guestrooms and suites as well as 41 serviced apartments offer a personal sanctuary befitting a tropical escape in the city. The 34 spacious suites, including 3 Specialty Suites and the Shangri-La Suite, are the finest in Colombo.

## GUESTROOM FEATURES

- Each room offers 42 – 210 sq.m. of luxury and comfort
- Bedside controls for lighting and black-out curtains
- Climate control

## MEDIA & ENTERTAINMENT

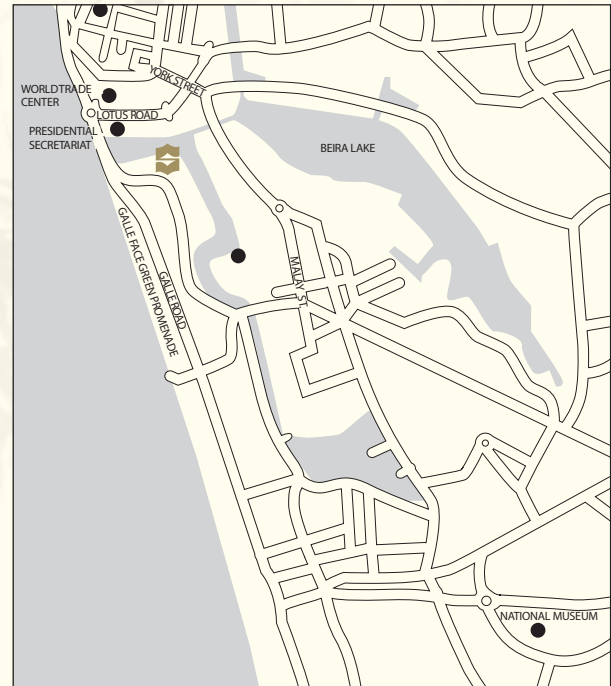
- Complimentary Wi-Fi
- 49" LED televisions with excellent selection of international television channels
- USB charging point alarm clock

## REFRESHMENTS

- Minibar
- Complimentary water

## OFFICE EQUIPMENT & STATIONERY

- International direct dial telephone with two lines and voicemail
- Electronic safe
- Universal plugs



## GUESTROOMS

Categories	Rooms	Area (m <sup>2</sup> )
Deluxe Lake View King	95	42
Deluxe Lake View Twin	95	42
Deluxe Ocean View King	35	42
Deluxe Ocean View Twin	6	42
Premier Ocean View King	137	42
Premier Ocean View Twin	14	42
Premier Balcony King	23	42
Horizon Club Lake View King	37	42
Horizon Club Lake View Twin	3	42
Horizon Club Ocean View King	18	42
Horizon Club Ocean View Twin	3	42
Executive Suite King	29	84
Executive Suite Twin	1	84
Specialty Suite	3	126
Shangri-La Suite	1	210
Hotel Apartment 1 Bedroom	27	84
Hotel Apartment 2 Bedroom	14	126

## BATH & PERSONAL CARE

- Large marble-clad bathroom
- Walk-in shower
- Plush bathrobes
- Feather duvet and pillows
- Pillow menu with hypoallergenic options
- Ironing board
- 24-hour laundry valet

## HORIZON CLUB PRIVILEGES

- Private check-in/out in your room or Horizon Club Lounge
- Complimentary daily breakfast
- Access to the Horizon Club Lounge on the 32nd floor with stunning ocean views, complimentary evening cocktails and canapés, and beverages served all day
- Wi-Fi and broadband Internet access, wide selection of newspapers and magazines
- Complimentary use of Executive Boardrooms for two hours per day
- Suit pressing and shoe shine service

## RESTAURANTS AND BARS

Unlocking a new social and dining scene in the city, the four restaurants, bars and lounges at Shangri-La Hotel, Colombo offer an uncompromising selection of local and international cuisine, al fresco dining, daily live entertainment, innovative menus and trendy destinations.

Restaurants / Bars	Capacity	Location	Cuisine
Capital Bar & Grill	204	Lobby Level	Western & Grill
Kaema Sutra	133	Level 4	Sri Lankan
Sapphyr Lounge	108	Lobby Level	Snacks, beverages
Poolside bar	•	Level 4	Comfort food, beverages
Shang Palace	140	Level 3	Chinese

## CONFERENCE SUPPORT CENTRE

Offering a range of administrative and organisational support services for conference organisers and delegates

## CHI, THE SPA AT SHANGRI-LA

- 7 treatment rooms
- Signature treatments
- Open daily

## RECREATION FACILITIES

- Swimming pool
- Shopping
- Health club

## OTHER SERVICES AND FACILITIES

- Covered parking

## BANQUET AND CONFERENCE ROOMS

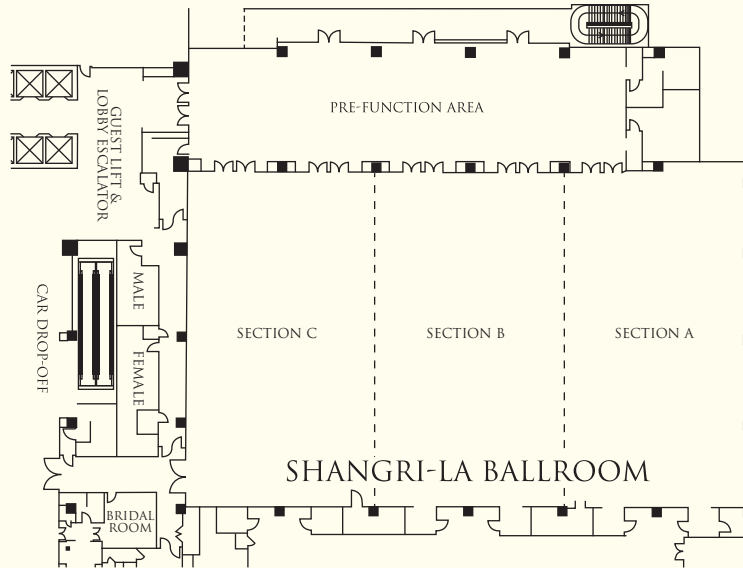
Shangri-La Hotel, Colombo has the most extensive and versatile event space in Sri Lanka. We offer a range of flexible venues from the largest pillar-less ballroom in the country to multiple Executive Boardrooms in the Horizon Club overlooking the ocean, and even a spacious outdoor venue. The hotel can cater to seated banquets for up to 1,440 guests and receptions for over 3,000. Our professional sales, service, and culinary teams are the finest in Colombo, offering guests bespoke Conference and Banqueting packages catered by our distinguished Chefs and creating experiences you and your guests will remember.

Venue	Capacity						Dimensions (m)	Area (m <sup>2</sup> )	Ceiling Height (m)
	Reception	Theatre	Banquet	Classroom	U-Shape	Boardroom			
Shangri-La Ballroom	3,000	2,500	1,440	924	171	186	31 x 51	1,581	7
Section A	800	750	480	273	93	111	31 x 17	527	7
Section B	800	750	480	273	93	111	31 x 18	558	7
Section C	800	750	480	273	93	111	31 x 17	527	7
Prefunction Area	•	•	•	•	•	•	10.3 x 41	422	7
Lotus Ballroom	600	504	384	234	108	123	14 x 34.2	479	4.25
Pink	150	126	96	54	36	40	14 x 8.1	113	4.25
Red	150	126	96	54	36	40	14 x 8.5	119	4.25
White	150	126	96	54	36	40	14 x 8.5	119	4.25
Yellow	150	126	96	54	36	40	14 x 8.6	120	4.25
Spice Room	200	160	211	45	90	96	10.9 x 27.5	300	4.25
Ginger	80	93	72	27	36	39	10.9 x 10.2	111	4.25
Saffron	80	93	48	27	36	39	10.9 x 8.6	94	4.25
Tamarind	80	93	48	27	36	39	10.9 x 8.6	94	4.25
Prefunction Area	•	•	•	•	•	•	5.7 x 37	211	4.25
The Lawn with Marquee	750	650	420	•	•	•	18 x 31	558	•

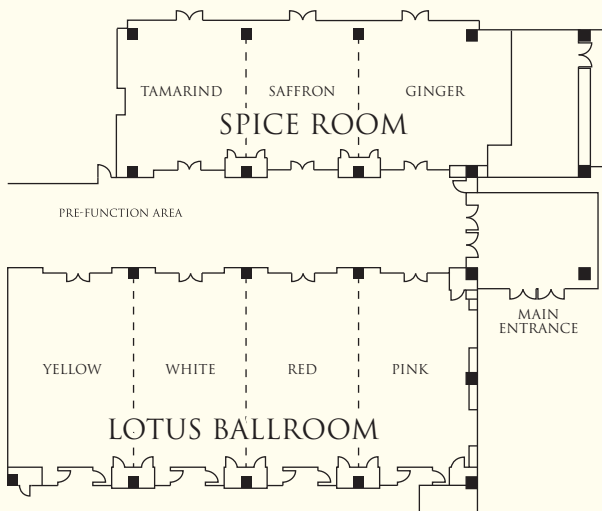
Note: All banquet seating accommodates 12 guests per table

The seating capacity of the function rooms will vary depending on the seating and set up

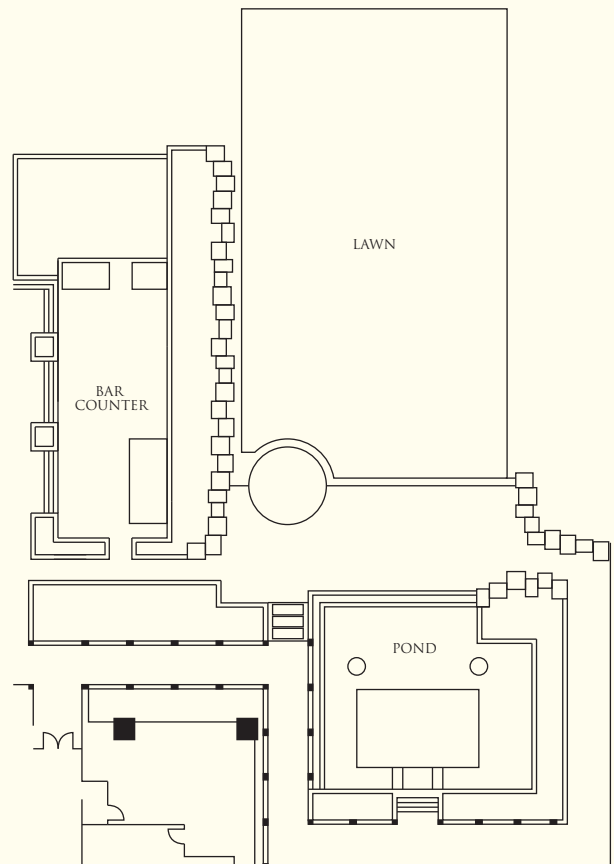
LEVEL 2 - SHANGRI-LA BALLROOM



LEVEL 1 - SPICE ROOM AND LOTUS BALLROOM



LEVEL 4 - THE LAWN WITH MARQUEE





**SHANGRI-LA**

HOTELS *and* RESORTS

Shangri-La Hotel, Colombo  
1 Galle Face, Colombo 2, Sri Lanka

Tel: (94) 11 788 8288 [colombo@shangri-la.com](mailto:colombo@shangri-la.com) [www.shangri-la.com](http://www.shangri-la.com)